

GDF15 RABBIT PAB

货号: N226009

产品全名: GDF15 兔多抗

基因符号 GDF15; MIC1; PDF; PLAB; PTGFB; Growth/differentiation factor 15; GDF-15; Macrophage inhibitory cytokine 1; MIC-1; NSAID-activated gene 1 protein; NAG-1; NSAID-regulated gene 1 protein; NRG-1; Placental TGF-beta; Placental bone morphogenetic

UNIPROT ID: Q99988

背景: Highly expressed in placenta, with lower levels in prostate and colon and some expression in kidney.

抗原: Recombinant protein of human GDF15

经过测试的应用: IP, WB

推荐稀释比: WB: 1/500-1/1000 IP: 1/20

种属反应性: Rabbit

克隆性: Rabbit Polyclonal

分子量: Calculated MW: 34 kDa; Observed MW: 35,13 kDa

亚型: IgG

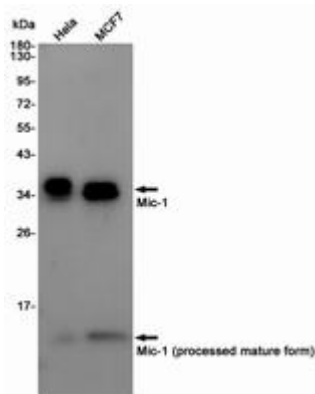
纯化: Affinity Purified

种属反应性: Human

成分: PBS (without Mg²⁺ and Ca²⁺), pH 7.3 containing 50% glycerol, 0.5% BSA and 0.02% sodium azide

研究领域: Cell Biology

储存和运输: Store at -20°C. Avoid repeated freezing and thawing



Western blot analysis of GDF15/Mic1 in HeLa, MCF-7 lysates using GDF15 antibody.



Product Description

Pioneering GTPase and Oncogene Product Development since 2010
