

## GCM2 RABBIT PAB

货号: N225233

产品全名: GCM2 兔多抗

基因符号 Chorion-specific transcription factor GCMb (hGCMb; GCM motif protein 2; Glial cells missing homolog 2)

**UNIPROT ID:** O75603

背景: Transcription factor that binds specific sequences on gene promoters and activate their transcription.

抗原: Synthesized peptide derived from human GCM2. at AA range: 21-70

经过测试的应用: WB,ELISA

推荐稀释比: WB: 1/500-1/1000 ELISA: 1/10000

种属反应性: Rabbit

克隆性: Rabbit Polyclonal

分子量: Calculated MW: 57 kDa; Observed MW: 57 kDa

亚型: IgG

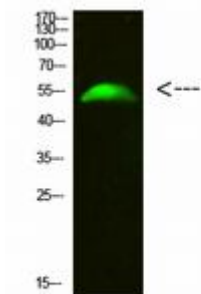
纯化: Affinity Purified

种属反应性: Human, Mouse and Rat

成分: PBS (without Mg<sup>2+</sup> and Ca<sup>2+</sup>), pH 7.3 containing 50% glycerol, 0.5% BSA and 0.02% sodium azide

研究领域: Stem Cells

储存和运输: Store at -20°C. Avoid repeated freezing and thawing



Western blot analysis of GCM2 in 293T lysates using GCM2 antibody.