

GCET2 RABBIT MAB

货号: N262262

产品全名: GCET2 兔单克隆抗体

基因符号 GCAT2; Gcet; Gcsam; hGAL; MI7; MI7 L

UNIPROT ID: Q8N6F7

背景: Involved in the negative regulation of lymphocyte motility. It mediates the migration-inhibitory effects of IL6. Serves as a positive regulator of the RhoA signaling pathway. Enhancement of RhoA activation results in inhibition of lymphocyte and lymphoma cell motility by activation of its downstream effector ROCK. Is a regulator of B-cell receptor signaling, that acts through SYK kinase activation.

抗原: Recombinant protein of human GCET2

经过测试的应用: WB,IHC-F,IHC-P,ICC/IF

推荐稀释比: WB: 1/500-1/1000 IHC: 1/50-1/100 IF: 1/50-1/200

种属反应性: Rabbit

克隆性: Rabbit Monoclonal

克隆编号: R05-4H2

分子量: Calculated MW: 21 kDa; Observed MW: 21 kDa

亚型: IgG

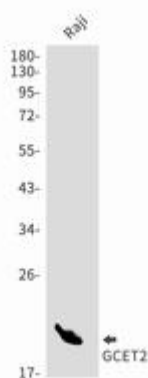
纯化: Affinity Purified

种属反应性: Human

成分: PBS (without Mg²⁺ and Ca²⁺), pH 7.3 containing 50% glycerol, 0.5% BSA and 0.02% sodium azide

研究领域: Immunology

储存和运输: Store at -20°C. Avoid repeated freezing and thawing



Western blot analysis of GCET2 in Raji lysates using GCET2 antibody.



Product Description

Pioneering GTPase and Oncogene Product Development since 2010
