

## FRS2 RABBIT MAB

货号: N263336

产品全名: FRS2 兔单克隆抗体

基因符号 Fibroblast growth factor receptor substrate 2; FGFR substrate 2; FGFR-signaling adaptor SNT; Src1-associated neurotrophic factor target 1; SNT-1

**UNIPROT ID:** Q8WU20

背景: Adapter protein that links FGR and NGF receptors to downstream signaling pathways. Involved in the activation of MAP kinases. Modulates signaling via SHC1 by competing for a common binding site on NTRK1.

抗原: Recombinant protein of human FRS2

经过测试的应用: WB,IP

推荐稀释比: WB: 1/500-1/1000 IP: 1/20

种属反应性: Rabbit

克隆性: Rabbit Monoclonal

克隆编号: R01-7G7

分子量: Calculated MW: 57 kDa; Observed MW: 80-85 kDa

亚型: IgG

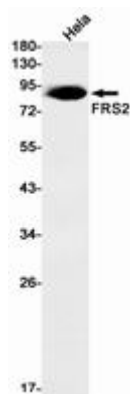
纯化: Affinity Purified

种属反应性: Human

成分: PBS (without Mg<sup>2+</sup> and Ca<sup>2+</sup>), pH 7.3 containing 50% glycerol, 0.5% BSA and 0.02% sodium azide

研究领域: Signal Transduction

储存和运输: Store at -20°C. Avoid repeated freezing and thawing



Western blot analysis of FRS2 in HeLa lysates using FRS2 antibody.



# Product Description

Pioneering GTPase and Oncogene Product Development since 2010

---