

## FRA2 RABBIT MAB

货号: N262238

产品全名: FRA2 兔单克隆抗体

基因符号 FOSL2; FRA2; Fos-related antigen 2; FRA-2

**UNIPROT ID:** P15408

**背景:** Controls osteoclast survival and size (By similarity). As a dimer with JUN, activates LIF transcription (By similarity). Activates CEBPB transcription in PGE2-activated osteoblasts.

**抗原:** A synthetic peptide of human FRA2

**经过测试的应用:** WB,IP

**推荐稀释比:** WB: 1/500-1/1000 IP: 1/20

**种属反应性:** Rabbit

**克隆性:** Rabbit Monoclonal

**克隆编号:** R07-2A4

**分子量:** Calculated MW: 35 kDa; Observed MW: 35-45 kDa

**亚型:** IgG

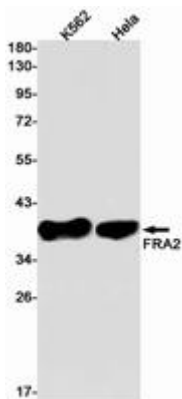
**纯化:** Affinity Purified

**种属反应性:** Human

**成分:** PBS (without Mg<sup>2+</sup> and Ca<sup>2+</sup>), pH 7.3 containing 50% glycerol, 0.5% BSA and 0.02% sodium azide

**研究领域:** Epigenetics and Nuclear Signaling

**储存和运输:** Store at -20°C. Avoid repeated freezing and thawing



Western blot analysis of FRA2 in K562, HeLa lysates using FRA2 antibody.