

## FOLATE BINDING PROTEIN RABBIT MAB

货号: N262230

产品全名: Folate Binding Protein 兔单克隆抗体

基因符号 FOLR1; FOLR; Folate receptor alpha; FR-alpha; Adult folate-binding protein; FBP; Folate receptor 1; Folate receptor; adult; KB cells FBP; Ovarian tumor-associated antigen MOv18

**UNIPROT ID:** P15328

背景: Binds to folate and reduced folic acid derivatives and mediates delivery of 5-methyltetrahydrofolate to the interior of cells.

抗原: A synthetic peptide of human Folate Binding 蛋白

经过测试的应用: WB,IHC-P

推荐稀释比: WB: 1/500-1/1000 IHC: 1/50-1/100

种属反应性: Rabbit

克隆性: Rabbit Monoclonal

克隆编号: R02-3G2

分子量: Calculated MW: 30 kDa; Observed MW: 40 kDa

亚型: IgG

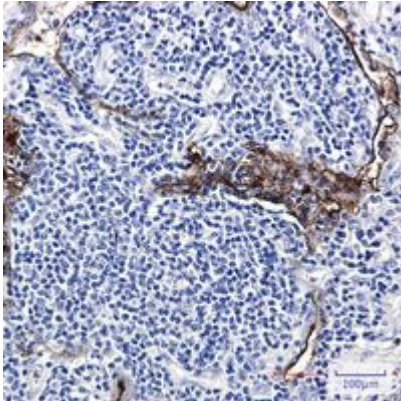
纯化: Affinity Purified

种属反应性: Human

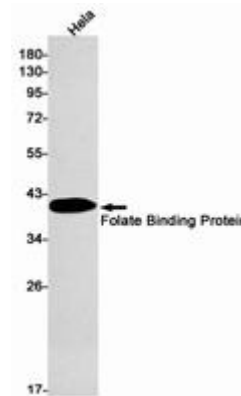
成分: PBS (without Mg<sup>2+</sup> and Ca<sup>2+</sup>), pH 7.3 containing 50% glycerol, 0.5% BSA and 0.02% sodium azide

研究领域: Tags & Cell Markers

储存和运输: Store at -20°C. Avoid repeated freezing and thawing



Immunohistochemistry analysis of paraffin-embedded Human lung cancer using Folate Binding Protein antibody. High-pressure and temperature Sodium Citrate pH 6.0 was used for antigen retrieval.



Western blot analysis of Folate Binding Protein in HeLa lysates using Folate Binding Protein antibody.