

## FILAMIN A RABBIT PAB

货号: N226061

产品全名: Filamin A 兔多抗

基因符号 ABP-280; ABPX; actin binding protein 280; Alpha-filamin; filamin 1; filamin A; alpha; FLN1; FLNA; FMD; MNS; NHBP; Non-muscle filamin; OPD; OPD1

**UNIPROT ID:** P21333

背景: Promotes orthogonal branching of actin filaments and links actin filaments to membrane glycoproteins. Anchors various transmembrane proteins to the actin cytoskeleton and serves as a scaffold for a wide range of cytoplasmic signaling proteins. Interaction with FLNA may allow neuroblast migration from the ventricular zone into the cortical plate.

抗原: A synthetic peptide of human Filamin A

经过测试的应用: WB,IHC-F,IHC-P,ICC/IF,FC

推荐稀释比: WB: 1/500-1/1000 IHC: 1/50-1/100 IF: 1/50-1/200 FC: 1/50-1/100

种属反应性: Rabbit

克隆性: Rabbit Polyclonal

分子量: Calculated MW: 281 kDa; Observed MW: 281 kDa

亚型: IgG

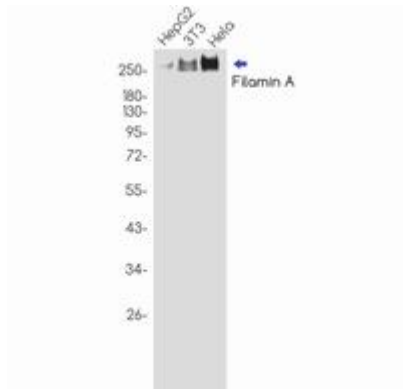
纯化: Affinity Purified

种属反应性: Human, Mouse and Rat

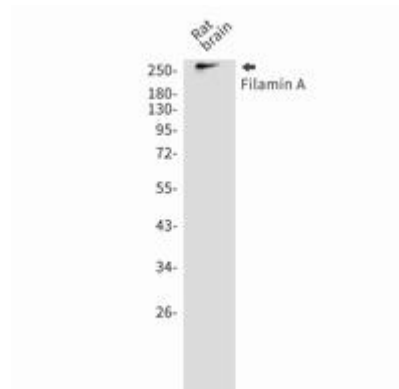
成分: PBS (without Mg<sup>2+</sup> and Ca<sup>2+</sup>), pH 7.3 containing 50% glycerol, 0.5% BSA and 0.02% sodium azide

研究领域: Cell Biology

储存和运输: Store at -20°C. Avoid repeated freezing and thawing



Western blot analysis of Filamin A in HepG2, 3T3, Hela lysates using Filamin A antibody.



Western blot analysis of Filamin A in rat brain lysates using Filamin A antibody.