

## FCGR1A RABBIT MAB

货号: N262213

产品全名: FCGR1A 兔单克隆抗体

基因符号 Fc-gamma RI; FcRI; Fc-gamma R1A; FcgammaR1a; CD64

**UNIPROT ID:** P12314

背景: High affinity receptor for the Fc region of immunoglobulins gamma. Functions in both innate and adaptive immune responses.

抗原: A synthetic peptide of human FCGR1A

经过测试的应用: WB, ICC/IF, IP

推荐稀释比: WB: 1/500-1/1000 IF: 1/50-1/200 IP: 1/20

种属反应性: Rabbit

克隆性: Rabbit Monoclonal

克隆编号: R08-6A8

分子量: Calculated MW: 43 kDa; Observed MW: 43-80 kDa

亚型: IgG

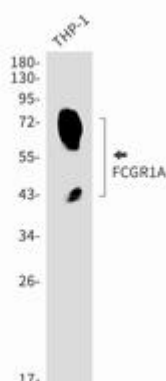
纯化: Affinity Purified

种属反应性: Human

成分: PBS (without Mg<sup>2+</sup> and Ca<sup>2+</sup>), pH 7.3 containing 50% glycerol, 0.5% BSA and 0.02% sodium azide

研究领域: Immunology

储存和运输: Store at -20°C. Avoid repeated freezing and thawing



Western blot analysis of FCGR1A in THP-1 lysates using FCGR1A antibody.