

EPSILON TUBULIN (4C4) MOUSE MAB

货号: N261325

产品全名: epsilon Tubulin (4C4) 小鼠单抗

基因符号 FLJ22589; TUBE1; tubulin epsilon 1; ϵ tubulin

UNIPROT ID: Q9UJT0

背景: This gene encodes a member of the tubulin superfamily. This protein localizes to the centriolar sub-distal appendages that are associated with the older of the two centrioles after centrosome duplication. This protein plays a central role in organization of the microtubules during centriole duplication. A pseudogene of this gene is found on chromosome 5.

抗原: Synthetic peptide conjugated to KLH.

经过测试的应用: IHC-P

推荐稀释比: IHC: 1/50-1/100

种属反应性: Mouse

克隆性: Mouse Monoclonal

克隆编号: 4C4-4H9-8C8

分子量: -

亚型: IgG1

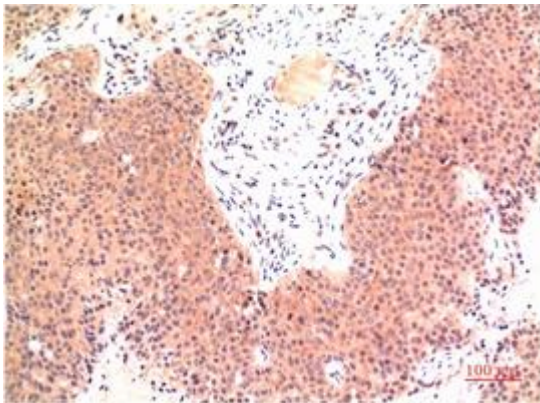
纯化: Affinity Purified

种属反应性: Human,Rat,Mouse

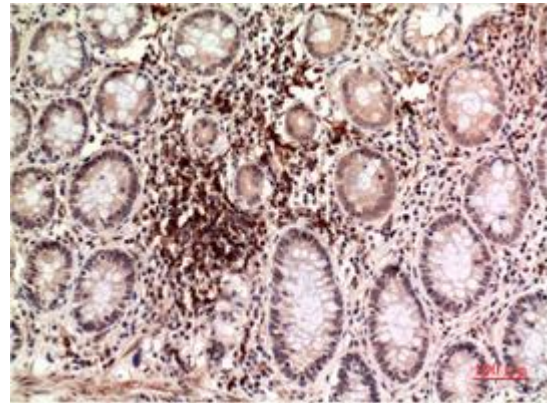
成分: PBS (without Mg²⁺ and Ca²⁺), pH 7.3 containing 50% glycerol, 0.5% BSA and 0.02% sodium azide

研究领域: Signal Transduction

储存和运输: Store at -20°C. Avoid repeated freezing and thawing



Immunohistochemical analysis of paraffin-embedded Human tonsils using epsilon Tubulin (4C4) antibody. High-pressure and temperature Sodium Citrate pH 6.0 was used for antigen retrieval.



Immunohistochemistry analysis of paraffin-embedded Human Colon Carcinoma Tissue using epsilon Tubulin (4C4) antibody. High-pressure and temperature Sodium Citrate pH 6.0 was used for antigen retrieval.