

## EPS15R RABBIT MAB

货号: N263319

产品全名: EPS15R 兔单克隆抗体

基因符号 EPS15R

**UNIPROT ID:** Q9UBC2

**背景:** Seems to be a constitutive component of clathrin-coated pits that is required for receptor-mediated endocytosis. Involved in endocytosis of integrin beta-1 (ITGB1) and transferrin receptor (TFR); internalization of ITGB1 as DAB2-dependent cargo but not TFR seems to require association with DAB2.

**抗原:** A synthetic peptide of human EPS15R

**经过测试的应用:** WB, ICC/IF

**推荐稀释比:** WB: 1/500-1/1000 IF: 1/50-1/200

**种属反应性:** Rabbit

**克隆性:** Rabbit Monoclonal

**克隆编号:** R05-8A0

**分子量:** Calculated MW: 94 kDa; Observed MW: 130 kDa

**亚型:** IgG

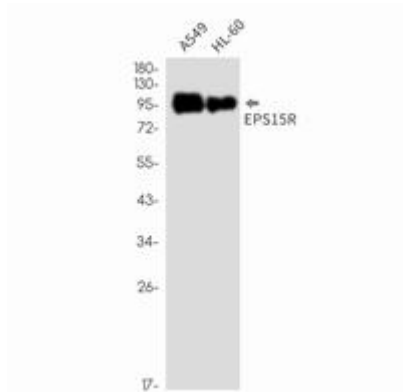
**纯化:** Affinity Purified

**种属反应性:** Human

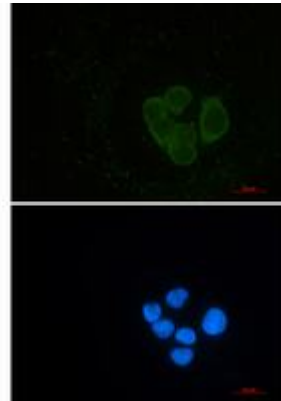
**成分:** PBS (without Mg<sup>2+</sup> and Ca<sup>2+</sup>), pH 7.3 containing 50% glycerol, 0.5% BSA and 0.02% sodium azide

**研究领域:** Signal Transduction

**储存和运输:** Store at -20°C. Avoid repeated freezing and thawing



Western blot analysis of EPS15R in A549, HL-60 lysates using EPS15R antibody.



Immunocytochemistry analysis of EPS15R (green) in Hela using EPS15R antibody, and DAPI (blue).