

EPHRIN RECEPTOR B1 RABBIT MAB

货号: N263316

产品全名: Ephrin Receptor B1 兔单克隆抗体

基因符号 EPHB1; ELK; EPHT2; HEK6; NET; Ephrin type-B receptor 1; ELK; EPH tyrosine kinase 2; EPH-like kinase 6; EK6; hEK6; Neuronally-expressed EPH-related tyrosine kinase; NET; Tyrosine-protein kinase receptor EPH-2

UNIPROT ID: P54762

背景: Receptor for members of the ephrin-B family. Binds to ephrin-B1, -B2 and -B3. Binding with the guidance cue ephrin-B2 at the optic chiasm midline redirect ventrotemporal (VT) retinal ganglion cells (RGCs) axons ipsilaterally. May be involved in cell-cell interactions in the nervous system.

抗原: A synthetic peptide of human Eph receptor B1/NET

经过测试的应用: WB,IP

推荐稀释比: WB: 1/500-1/1000 IP: 1/20

种属反应性: Rabbit

克隆性: Rabbit Monoclonal

克隆编号: R03-7A7

分子量: Calculated MW: 110 kDa; Observed MW: 135 kDa

亚型: IgG

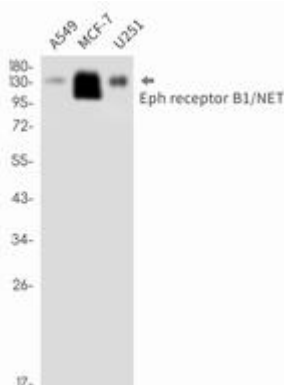
纯化: Affinity Purified

种属反应性: Human

成分: PBS (without Mg²⁺ and Ca²⁺), pH 7.3 containing 50% glycerol, 0.5% BSA and 0.02% sodium azide

研究领域: Neuroscience&Ephrin Receptor

储存和运输: Store at -20°C. Avoid repeated freezing and thawing



Western blot analysis of Eph receptor B1/NET in A549, MCF-7, U251 lysates using Ephrin Receptor B1 antibody.



Product Description

Pioneering GTPase and Oncogene Product Development since 2010
