

EFEMP1 RABBIT MAB

货号: N263311

产品全名: EFEMP1 兔单克隆抗体

基因符号 DHRD; DRAD; FBNL; MLVT; MTLV; S1-5; FBLN3; FIBL-3; Fibulin-3

UNIPROT ID: Q12805

背景: Binds EGFR, the EGF receptor, inducing EGFR autophosphorylation and the activation of downstream signaling pathways.

抗原: Recombinant protein of human EFEMP1/Fibulin-3

经过测试的应用: WB,IHC-P,IP

推荐稀释比: WB: 1/500-1/1000 IHC: 1/50-1/100 IP: 1/20

种属反应性: Rabbit

克隆性: Rabbit Monoclonal

克隆编号: R01-7C7

分子量: Calculated MW: 55 kDa; Observed MW: 55 kDa

亚型: IgG

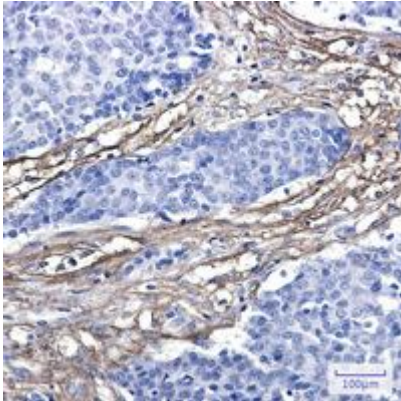
纯化: Affinity Purified

种属反应性: Human

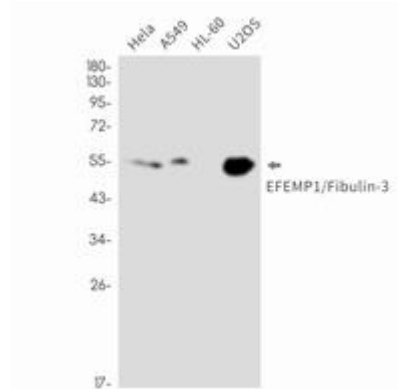
成分: PBS (without Mg²⁺ and Ca²⁺), pH 7.3 containing 50% glycerol, 0.5% BSA and 0.02% sodium azide

研究领域: -

储存和运输: Store at -20°C. Avoid repeated freezing and thawing



Immunohistochemistry analysis of paraffin-embedded Human breast cancer using EFEMP1/Fibulin3 antibody. High-pressure and temperature Sodium Citrate pH 6.0 was used for antigen retrieval.



Western blot analysis of EFEMP1/Fibulin3 in Hela, A549, HL-60, U2OS lysates using EFEMP1 antibody.