

## DGCR8 RABBIT PAB

货号: N225648

产品全名: DGCR8 兔多抗

基因符号 DGCR8; DGCRK6; Gyl; C22orf12; D16Wis2; pasha

**UNIPROT ID:** Q8WYQ5

**背景:** Component of the microprocessor complex that is required to process primary miRNA transcripts (pri-miRNAs) to release precursor miRNA (pre-miRNA) in the nucleus. Within the microprocessor complex, DGCR8 function as a molecular anchor necessary for the recognition of pri-miRNA at dsRNA-ssRNA junction and directs DROSHA to cleave 11 bp away from the junction to release hairpin-shaped pre-miRNAs that are subsequently cut by the cytoplasmic DICER to generate mature miRNAs.

**抗原:** A synthesized peptide derived from human DGCR8

**经过测试的应用:** WB, ICC/IF, IP

**推荐稀释比:** WB: 1/500-1/1000 IF: 1/50-1/200 IP: 1/20

**种属反应性:** Rabbit

**克隆性:** Rabbit Polyclonal

**分子量:** Calculated MW: 86 kDa; Observed MW: 100 kDa

**亚型:** IgG

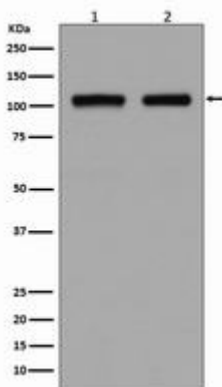
**纯化:** Affinity Chromatography

**种属反应性:** Human, Mouse and Rat

**成分:** PBS (without Mg<sup>2+</sup> and Ca<sup>2+</sup>), pH 7.3 containing 50% glycerol, 0.5% BSA and 0.02% sodium azide

**研究领域:** Epigenetics and Nuclear Signaling

**储存和运输:** Store at -20°C. Avoid repeated freezing and thawing



Western blot analysis of DGCR8 in (1) HEK293 lysates; (2) HeLa lysates using DGCR8 antibody.



# Product Description

Pioneering GTPase and Oncogene Product Development since 2010

---