

CYCLIN E2 RABBIT MAB

货号: N262090

产品全名: Cyclin E2 兔单克隆抗体

基因符号 CCNE2; G1/S-specific cyclin-E2

UNIPROT ID: O96020

背景: The human Cyclin E2 gene encodes a 404 amino acid protein that is most closely related to Cyclin E. Cyclin E2 mRNA levels peaks at the G1 / S transition. Cyclin E2 associates with Cdk2 in a functional kinase complex that is inhibited by both p27 (Kip1) and p21 (Cip1). Cyclin E2 / Cdk2 phosphorylates histone H1 in vitro. G1 cyclin E controls the initiation of DNA synthesis by activating CDK2. Abnormally high levels of cyclin E expression have frequently been observed in human cancers.

抗原: A synthetic peptide of human Cyclin E2

经过测试的应用: WB,IHC-F,IHC-P,ICC/IF

推荐稀释比: WB: 1/500-1/1000 IHC: 1/50-1/100 IF: 1/50-1/200

种属反应性: Rabbit

克隆性: Rabbit Monoclonal

克隆编号: R02-1C0

分子量: Calculated MW: 47 kDa; Observed MW: 47 kDa

亚型: IgG

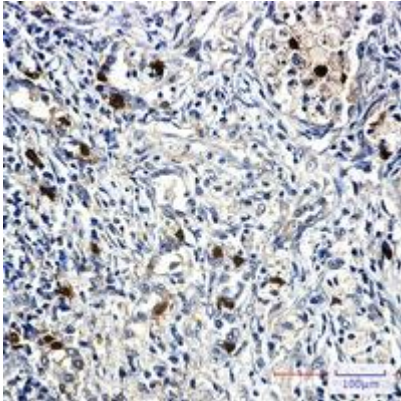
纯化: Affinity Purified

种属反应性: Human

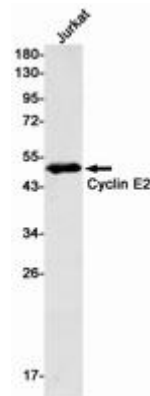
成分: PBS (without Mg²⁺ and Ca²⁺), pH 7.3 containing 50% glycerol, 0.5% BSA and 0.02% sodium azide

研究领域: Cell Biology

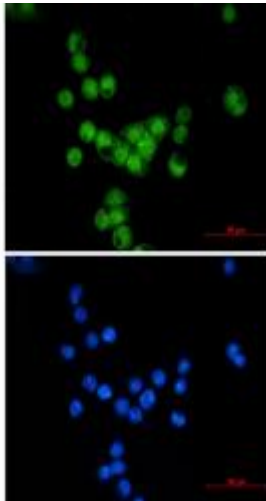
储存和运输: Store at -20°C. Avoid repeated freezing and thawing



Immunohistochemistry analysis of paraffin-embedded Human lung cancer using Cyclin E2 antibody. High-pressure and temperature Sodium Citrate pH 6.0 was used for antigen retrieval.



Western blot analysis of Cyclin E2 in Jurkat lysates using Cyclin E2 antibody.



Immunocytochemistry analysis of Cyclin E2 (green) in MCF-7 using Cyclin E2 antibody, and DAPI (blue)