

## CYCLIN B2 RABBIT MAB

货号: N263289

产品全名: Cyclin B2 兔单克隆抗体

基因符号 ccnb2; CycB2; Cyclin B2; G2/mitotic specific cyclin B2

**UNIPROT ID:** O95067

**背景:** Cyclin B2 is a member of the cyclin family, specifically the B-type cyclins. The B-type cyclins, B1 and B2, associate with p34cdc2 and are essential components of the cell cycle regulatory machinery. Essential for the control of the cell cycle at the G2/M (mitosis) transition.

**抗原:** Recombinant protein of human Cyclin B2/CCNB2

**经过测试的应用:** WB,IP

**推荐稀释比:** WB: 1/500-1/1000 IP: 1/20

**种属反应性:** Rabbit

**克隆性:** Rabbit Monoclonal

**克隆编号:** R05-3A6

**分子量:** Calculated MW: 45 kDa; Observed MW: 45 kDa

**亚型:** IgG

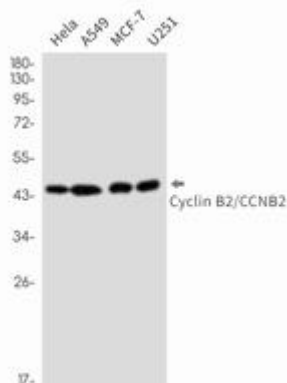
**纯化:** Affinity Purified

**种属反应性:** Human

**成分:** PBS (without Mg<sup>2+</sup> and Ca<sup>2+</sup>), pH 7.3 containing 50% glycerol, 0.5% BSA and 0.02% sodium azide

**研究领域:** Cell Biology

**储存和运输:** Store at -20°C. Avoid repeated freezing and thawing



Western blot analysis of Cyclin B2/CCNB2 in HeLa, A549, MCF-7, U251 lysates using Cyclin B2 antibody.



# Product Description

Pioneering GTPase and Oncogene Product Development since 2010

---