

CYCLIN B1 (1B3) MOUSE MAB

货号: N261328

产品全名: Cyclin B1 (1B3) 小鼠单抗

基因符号 CCNB1; CCNB; G2/mitotic-specific cyclin-B1

UNIPROT ID: P14635

背景: Essential for the control of the cell cycle at the G2/M (mitosis) transition. a member of the highly conserved cyclin family, whose members are characterized by a dramatic periodicity in protein abundance through the cell cycle. Cyclins function as regulators of CDK kinases.

抗原: Synthetic peptide conjugated to KLH.

经过测试的应用: IHC-P

推荐稀释比: IHC: 1/50-1/100

种属反应性: Mouse

克隆性: Mouse Monoclonal

克隆编号: 1B3-3B1-1B4

分子量: -

亚型: IgG

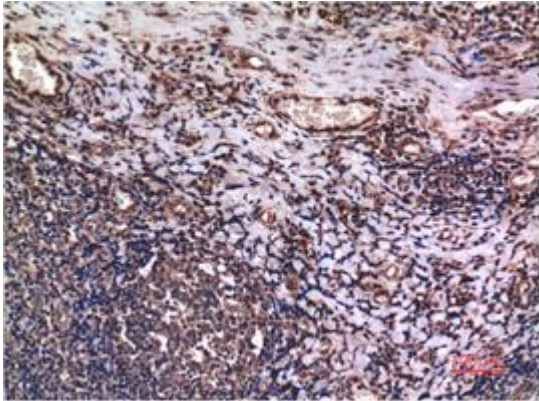
纯化: Affinity Purified

种属反应性: Human,Rat,Mouse

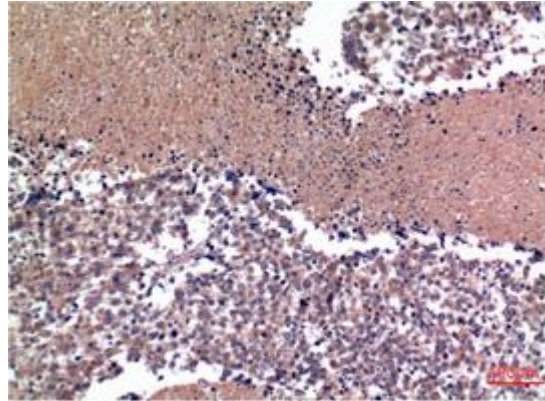
成分: PBS (without Mg²⁺ and Ca²⁺), pH 7.3 containing 50% glycerol, 0.5% BSA and 0.02% sodium azide

研究领域: Cell Biology

储存和运输: Store at -20°C. Avoid repeated freezing and thawing



Immunohistochemical analysis of paraffin-embedded Human tonsils using Cyclin B1 (1B3) antibody. High-pressure and temperature Sodium Citrate pH 6.0 was used for antigen retrieval.



Immunohistochemistry analysis of paraffin-embedded Human Lung Carcinoma Tissue using Cyclin B1 (1B3) antibody. High-pressure and temperature Sodium Citrate pH 6.0 was used for antigen retrieval.