

## CYCLIN A1 RABBIT PAB

货号: N225353

产品全名: Cyclin A1 兔多抗

基因符号 CCNA1; Cyclin-A1

**UNIPROT ID:** P78396

背景: May be involved in the control of the cell cycle at the G1/S (start) and G2/M (mitosis) transitions.

抗原: The antiserum was produced against synthesized peptide derived from human Cyclin A. AA range:221-270

经过测试的应用: WB,IHC-F,IHC-P,ICC/IF,ELISA

推荐稀释比: WB: 1/500-1/1000 IHC: 1/50-1/100 IF: 1/50-1/200 ELISA: 1/10000

种属反应性: Rabbit

克隆性: Rabbit Polyclonal

分子量: Calculated MW: 52 kDa; Observed MW: 52 kDa

亚型: IgG

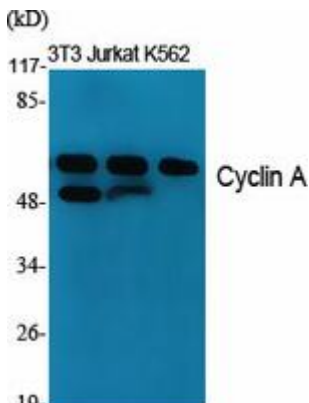
纯化: Affinity Purified

种属反应性: Human, Mouse and Rat,Monkey

成分: PBS (without Mg<sup>2+</sup> and Ca<sup>2+</sup>), pH 7.3 containing 50% glycerol, 0.5% BSA and 0.02% sodium azide

研究领域: Cell Biology

储存和运输: Store at -20°C. Avoid repeated freezing and thawing



Western blot analysis of Cyclin A1 in various lysates using Cyclin A1 antibody.