

## CYCLIN A1/A2 RABBIT MAB

货号: N263634

产品全名: Cyclin A1/A2 兔单克隆抗体

基因符号 CCN1; CCNA; CCNA1; CCNA2; CT146; Cyclin-A; Cyclin-A1; Cyclin-A2

**UNIPROT ID:** P20248/P78396

**背景:** May primarily function in the control of the germline meiotic cell cycle and additionally in the control of mitotic cell cycle in some somatic cells. Essential for the control of the cell cycle at the G1/S (start) and the G2/M (mitosis) transitions.

**抗原:** A synthesized peptide derived from human Cyclin A1/A2

**经过测试的应用:** WB,IP

**推荐稀释比:** WB: 1/500-1/1000 IP: 1/20

**种属反应性:** Rabbit

**克隆性:** Rabbit Monoclonal

**克隆编号:** R07-3D4

**分子量:** Calculated MW: 52,49 kDa; Observed MW: 52,49 kDa

**亚型:** IgG

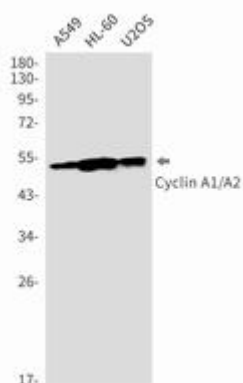
**纯化:** Affinity Purified

**种属反应性:** Human

**成分:** PBS (without Mg<sup>2+</sup> and Ca<sup>2+</sup>), pH 7.3 containing 50% glycerol, 0.5% BSA and 0.02% sodium azide

**研究领域:** Cell Biology

**储存和运输:** Store at -20°C. Avoid repeated freezing and thawing



Western blot analysis of Cyclin A1/A2 in A549, HL-60, U2OS lysates using Cyclin A1/A2 antibody.



# Product Description

Pioneering GTPase and Oncogene Product Development since 2010

---