

CULLIN 1 RABBIT MAB

货号: N262078

产品全名: Cullin 1 兔单克隆抗体

基因符号 CUL1; Cullin1

UNIPROT ID: Q13616

背景: Core component of multiple cullin-RING-based SCF (SKP1-CUL1-F-box protein) E3 ubiquitin-protein ligase complexes, which mediate the ubiquitination of proteins involved in cell cycle progression, signal transduction and transcription.

抗原: A synthetic peptide of human Cullin 1

经过测试的应用: WB, ICC/IF

推荐稀释比: WB: 1/500-1/1000 IF: 1/50-1/200

种属反应性: Rabbit

克隆性: Rabbit Monoclonal

克隆编号: R05-3D2

分子量: Calculated MW: 90 kDa; Observed MW: 90 kDa

亚型: IgG

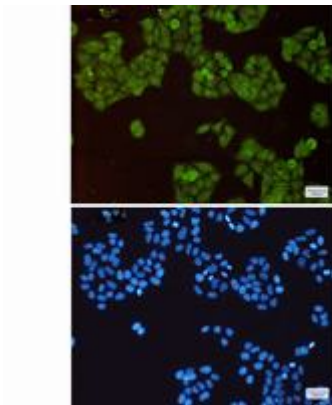
纯化: Affinity Purified

种属反应性: Human, Mouse and Rat

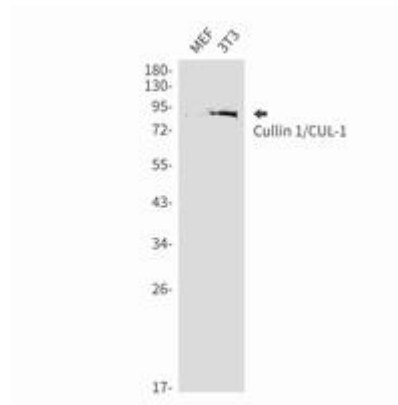
成分: PBS (without Mg²⁺ and Ca²⁺), pH 7.3 containing 50% glycerol, 0.5% BSA and 0.02% sodium azide

研究领域: Cell Biology

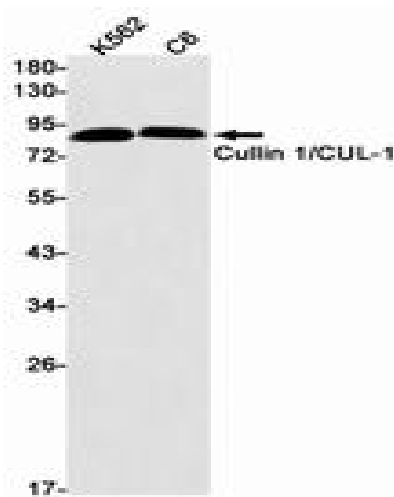
储存和运输: Store at -20°C. Avoid repeated freezing and thawing



Immunocytochemistry analysis of Cullin 1 (green) in HeLa using Cullin 1 antibody, and DAPI (blue)



Western blot analysis of Cullin 1/CUL-1 in MEF, 3T3 lysates using Cullin 1 antibody.



Western blot analysis of Cullin 1/CUL-1 in K562, C6 lysates using Cullin 1/CUL-1 antibody.