

## CTSD RABBIT PAB

货号: S216396

产品全名: CTSD 兔多抗

基因符号 CPSD; CLN10; HEL-S-130P

**UNIPROT ID:** P07339 (Gene Accession - BC016320 )

**背景:** This gene encodes a member of the A1 family of peptidases. The encoded preproprotein is proteolytically processed to generate multiple protein products. These products include the cathepsin D light and heavy chains, which heterodimerize to form the mature enzyme. This enzyme exhibits pepsin-like activity and plays a role in protein turnover and in the proteolytic activation of hormones and growth factors. Mutations in this gene play a causal role in neuronal ceroid lipofuscinosis-10 and may be involved in the pathogenesis of several other diseases, including breast cancer and possibly Alzheimer's disease.

**抗原:** Fusion protein of human CTSD

**经过测试的应用:** ELISA, IHC

**推荐稀释比:** IHC: 30-150; ELISA: 5000-10000

**种属反应性:** Rabbit

**克隆性:** Rabbit Polyclonal

**亚型:** Immunogen-specific rabbit IgG

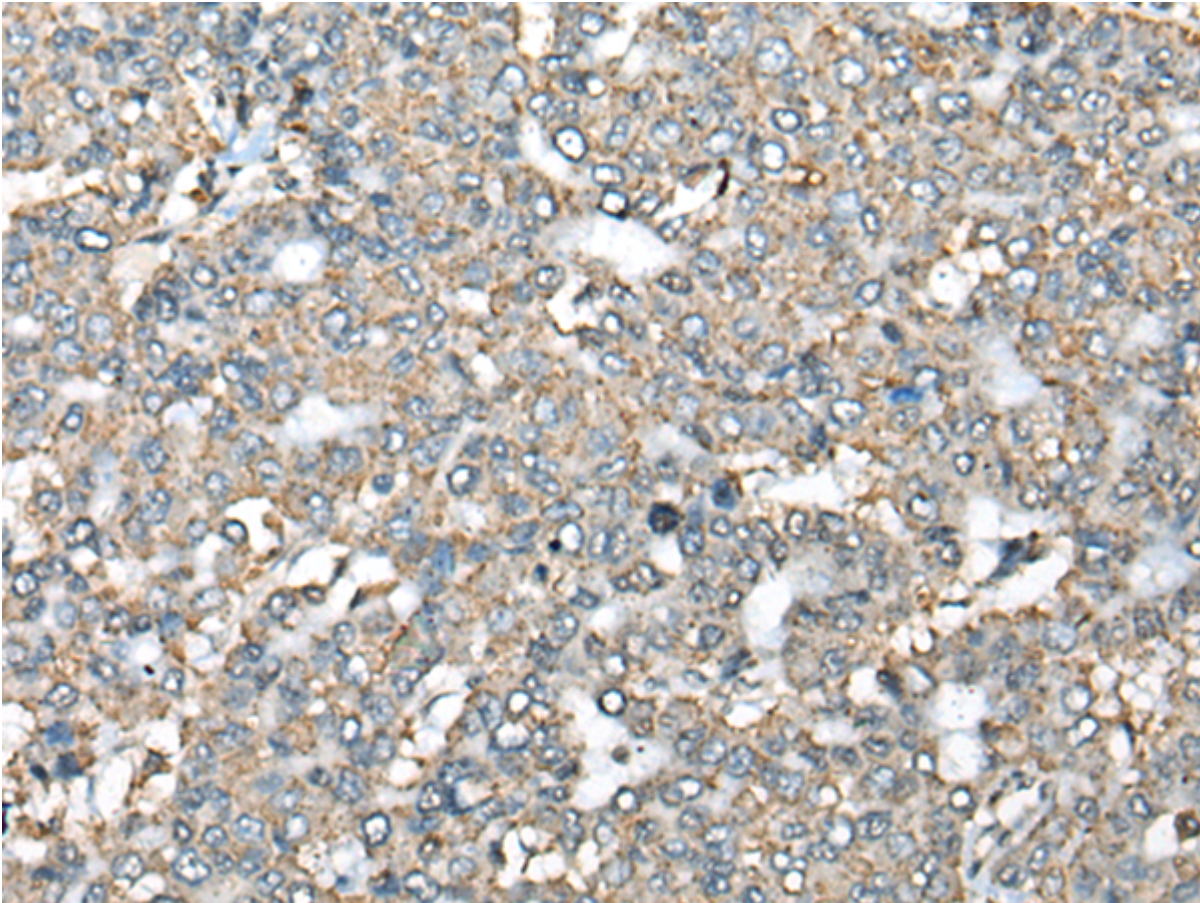
**纯化:** Antigen affinity purification

**种属反应性:** Human, Mouse, Rat

**成分:** PBS (without Mg<sup>2+</sup> and Ca<sup>2+</sup>), pH 7.4, 150 mM NaCl, 0.05% Sodium Azide and 40% glycerol

**研究领域:** Signal Transduction, Cell Biology, Neuroscience

**储存和运输:** Store at -20°C. Avoid repeated freezing and thawing



Immunohistochemistry analysis of paraffin-embedded Human liver cancer tissue using 216396(CTSD Antibody) at a dilution of 1/30(Cytoplasm).