

CTNNA1 RABBIT MAB

货号: N261824

产品全名: CTNNA1 兔单克隆抗体

基因符号 Catenin alpha-1; Alpha E-catenin; Cadherin-associated protein; Renal carcinoma antigen NY-REN-13

UNIPROT ID: P35221

背景: Adherens junctions are dynamic structures that form cell-cell contacts and are important in development, differentiation, tissue integrity, morphology and cell polarity. They are composed of the transmembrane proteins, cadherins, which bind cadherins on adjacent cells in a calcium-dependent manner.

抗原: A synthetic peptide of human alpha 1 Catenin

经过测试的应用: WB,IP

推荐稀释比: WB: 1/500-1/1000 IP: 1/20

种属反应性: Rabbit

克隆性: Rabbit Monoclonal

克隆编号: R07-7D5

分子量: Calculated MW: 100 kDa; Observed MW: 100 kDa

亚型: IgG

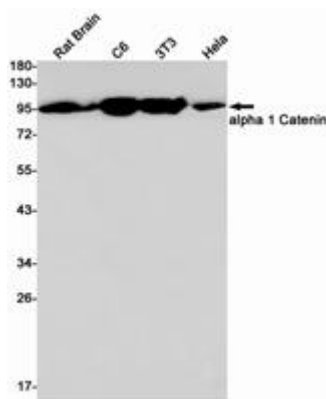
纯化: Affinity Purified

种属反应性: Human, Mouse and Rat

成分: PBS (without Mg²⁺ and Ca²⁺), pH 7.3 containing 50% glycerol, 0.5% BSA and 0.02% sodium azide

研究领域: Cell Biology

储存和运输: Store at -20°C. Avoid repeated freezing and thawing



Western blot analysis of alpha 1 Catenin in rat Brain, C6, 3T3, HeLa lysates using CTNNA1 antibody.



Product Description

Pioneering GTPase and Oncogene Product Development since 2010
