

## CRM1 RABBIT MAB

货号: N262067

产品全名: CRM1 兔单克隆抗体

基因符号 XPO1; CRM1; Exportin-1; Exp1; Chromosome region maintenance 1 protein homolog

**UNIPROT ID:** O14980

**背景:** Mediates the nuclear export of cellular proteins (cargos) bearing a leucine-rich nuclear export signal (NES) and of RNAs. In the nucleus, in association with RANBP3, binds cooperatively to the NES on its target protein and to the GTPase RAN in its active GTP-bound form (Ran-GTP). Docking of this complex to the nuclear pore complex (NPC) is mediated through binding to nucleoporins.

**抗原:** A synthetic peptide of human CRM1

**经过测试的应用:** WB,IHC-F,IHC-P,ICC/IF

**推荐稀释比:** WB: 1/500-1/1000 IHC: 1/50-1/100 IF: 1/50-1/200

**种属反应性:** Rabbit

**克隆性:** Rabbit Monoclonal

**克隆编号:** R01-9J7

**分子量:** Calculated MW: 123 kDa; Observed MW: 123 kDa

**亚型:** IgG

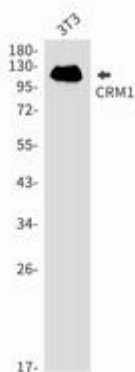
**纯化:** Affinity Purified

**种属反应性:** Human, Mouse and Rat

**成分:** PBS (without Mg<sup>2+</sup> and Ca<sup>2+</sup>), pH 7.3 containing 50% glycerol, 0.5% BSA and 0.02% sodium azide

**研究领域:** Signal Transduction

**储存和运输:** Store at -20°C. Avoid repeated freezing and thawing



Western blot analysis of CRM1 in 3T3 lysates using CRM1 antibody.



# Product Description

Pioneering GTPase and Oncogene Product Development since 2010

---