

COLLAGEN XII ALPHA 1 RABBIT PAB

货号: N225215

产品全名: Collagen XII alpha 1 兔多抗

基因符号 Collagen alpha-1(XII) chain

UNIPROT ID: Q99715

背景: Type XII collagen interacts with type I collagen-containing fibrils, the COL1 domain could be associated with the surface of the fibrils, and the COL2 and NC3 domains may be localized in the perifibrillar matrix.

抗原: Synthetic peptide from human protein at AA range: 1993-2064

经过测试的应用: IHC-P,ELISA

推荐稀释比: IHC: 1/50-1/100 ELISA: 1/10000

种属反应性: Rabbit

克隆性: Rabbit Polyclonal

分子量: -

亚型: IgG

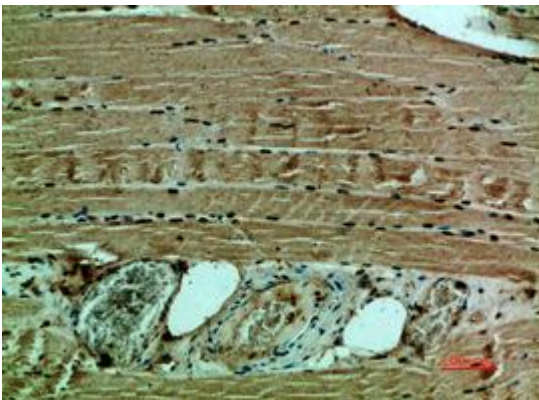
纯化: Affinity Purified

种属反应性: Human

成分: PBS (without Mg²⁺ and Ca²⁺), pH 7.3 containing 50% glycerol, 0.5% BSA and 0.02% sodium azide

研究领域: Cell Biology

储存和运输: Store at -20°C. Avoid repeated freezing and thawing



Immunohistochemistry analysis of paraffin-embedded Human muscle using Collagen XII alpha 1 antibody. High-pressure and temperature Sodium Citrate pH 6.0 was used for antigen retrieval.