

COLLAGEN VIII ALPHA 2 RABBIT PAB

货号: N225232

产品全名: Collagen VIII alpha 2 兔多抗

基因符号 Collagen alpha-2(VIII) chain (Endothelial collagen)

UNIPROT ID: P25067

背景: This gene encodes the alpha 2 chain of type VIII collagen. This protein is a major component of the basement membrane of the corneal endothelium and forms homo- or heterotrimers with alpha 1 (VIII) type collagens. Defects in this gene are associated with Fuchs endothelial corneal dystrophy and posterior polymorphous corneal dystrophy type 2. Alternative splicing results in multiple transcript variants.

抗原: Synthesized peptide derived from human COL8A2. at AA range: 611-660

经过测试的应用: WB,ELISA

推荐稀释比: WB: 1/500-1/1000 ELISA: 1/10000

种属反应性: Rabbit

克隆性: Rabbit Polyclonal

分子量: Calculated MW: 67 kDa; Observed MW: 80 kDa

亚型: IgG

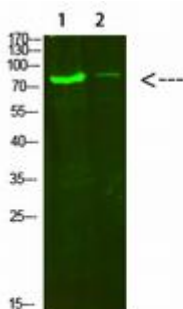
纯化: Affinity Purified

种属反应性: Human, Mouse and Rat

成分: PBS (without Mg²⁺ and Ca²⁺), pH 7.3 containing 50% glycerol, 0.5% BSA and 0.02% sodium azide

研究领域: Cell Biology

储存和运输: Store at -20°C. Avoid repeated freezing and thawing



Western blot analysis of Collagen VIII alpha 2 in HeLa, 3T3 lysates using Collagen VIII alpha 2 antibody.



Product Description

Pioneering GTPase and Oncogene Product Development since 2010
