

CNN1 RABBIT PAB

货号: S216385

产品全名: CNN1 兔多抗

基因符号 SMCC; Sm-Calp; HEL-S-14

UNIPROT ID: P51911 (Gene Accession - BC022015)

背景: Thin filament-associated protein that is implicated in the regulation and modulation of smooth muscle contraction. It is capable of binding to actin, calmodulin, troponin C and tropomyosin. The interaction of calponin with actin inhibits the actomyosin Mg-ATPase activity (By similarity).

抗原: Full length fusion 蛋白

经过测试的应用: ELISA, IHC

推荐稀释比: IHC: 30-150; ELISA: 5000-10000

种属反应性: Rabbit

克隆性: Rabbit Polyclonal

亚型: Immunogen-specific rabbit IgG

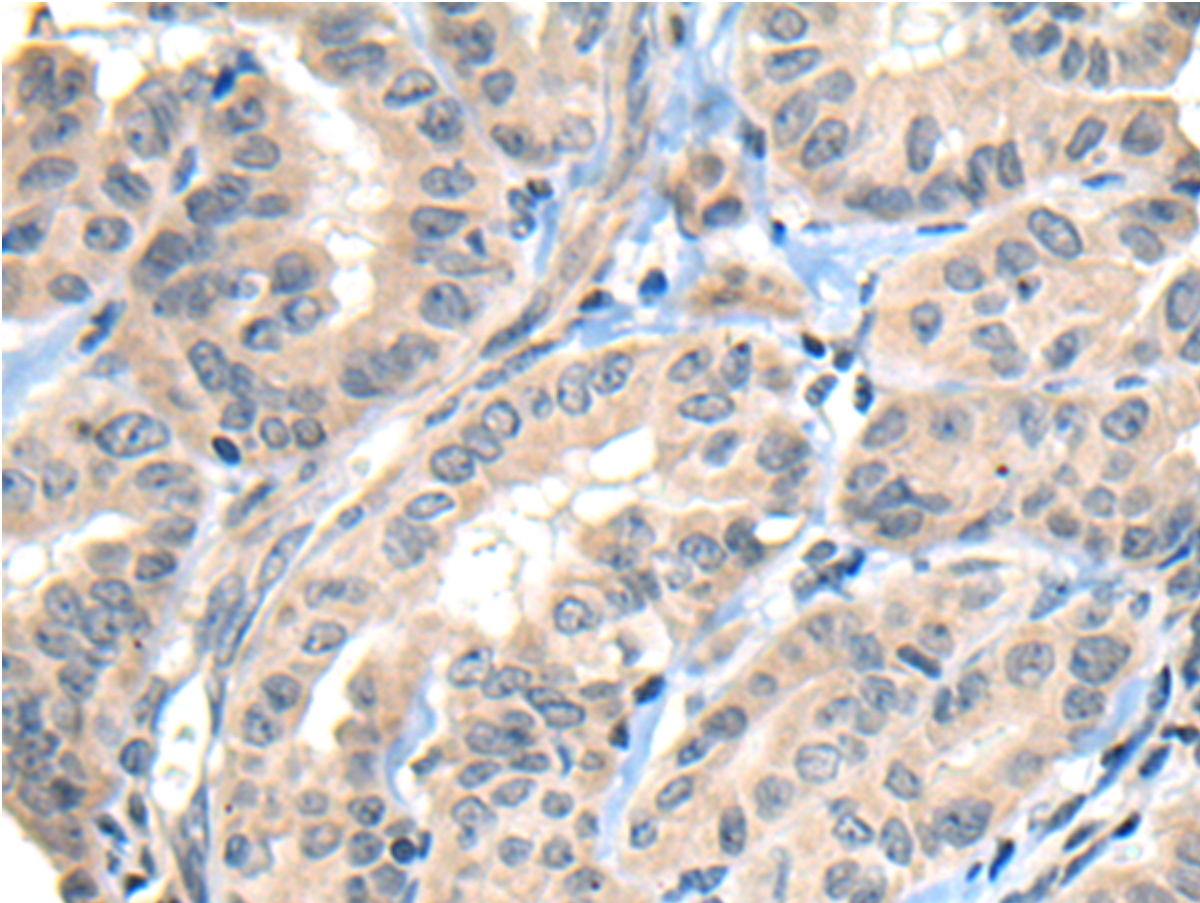
纯化: Antigen affinity purification

种属反应性: Human, Mouse, Rat

成分: PBS (without Mg²⁺ and Ca²⁺), pH 7.4, 150 mM NaCl, 0.05% Sodium Azide and 40% glycerol

研究领域: Signal Transduction, Cardiovascular, Stem Cells

储存和运输: Store at -20°C. Avoid repeated freezing and thawing



Immunohistochemistry analysis of paraffin-embedded Human thyroid cancer tissue using 216385(CNN1 Antibody) at a dilution of 1/30(Cytoplasm).