

## CLUSTERIN ALPHA CHAIN RABBIT MAB

货号: N262048

产品全名: Clusterin alpha Chain 兔单克隆抗体

基因符号 Cli; ApoJ; Sgp2; SP-40; Sgp-2; Sugp-2; AI893575; D14Ucla3

**UNIPROT ID:** Q06890

**背景:** Functions as extracellular chaperone that prevents aggregation of nonnative proteins. Prevents stress-induced aggregation of blood plasma proteins. Inhibits formation of amyloid fibrils by APP, APOC2, B2M, CALCA, CSN3, SNCA and aggregation-prone LYZ variants (in vitro). Does not require ATP. Maintains partially unfolded proteins in a state appropriate for subsequent refolding by other chaperones, such as HSPA8/HSC70. Does not refold proteins by itself.

**抗原:** Recombinant protein of mouse Clusterin alpha chain

**经过测试的应用:** WB,IP

**推荐稀释比:** WB: 1/500-1/1000 IP: 1/20

**种属反应性:** Rabbit

**克隆性:** Rabbit Monoclonal

**克隆编号:** R07-7A7

**分子量:** Calculated MW: 52 kDa; Observed MW: 42 kDa

**亚型:** IgG

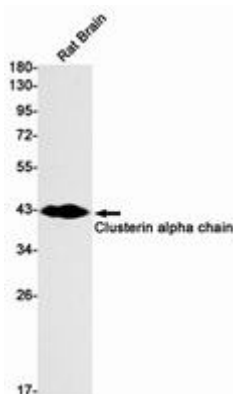
**纯化:** Affinity Purified

**种属反应性:** Rat

**成分:** PBS (without Mg<sup>2+</sup> and Ca<sup>2+</sup>), pH 7.3 containing 50% glycerol, 0.5% BSA and 0.02% sodium azide

**研究领域:** Immunology

**储存和运输:** Store at -20°C. Avoid repeated freezing and thawing



Western blot analysis of Clusterin alpha chain in rat Brain lysates using Clusterin alpha Chain antibody.



# Product Description

Pioneering GTPase and Oncogene Product Development since 2010

---