

CLPP RABBIT MAB

货号: N262046

产品全名: CLPP 兔单克隆抗体

基因符号 Endopeptidase Clp

UNIPROT ID: Q16740

背景: Clp cleaves peptides in various proteins in a process that requires ATP hydrolysis. Clp may be responsible for a fairly general and central housekeeping function rather than for the degradation of specific substrates.

抗原: A synthetic peptide of human CLPP

经过测试的应用: WB,IP

推荐稀释比: WB: 1/500-1/1000 IP: 1/20

种属反应性: Rabbit

克隆性: Rabbit Monoclonal

克隆编号: R02-1E5

分子量: Calculated MW: 30 kDa; Observed MW: 30 kDa

亚型: IgG

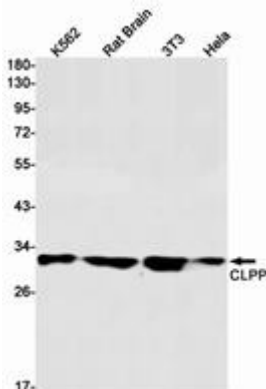
纯化: Affinity Purified

种属反应性: Human, Mouse and Rat

成分: PBS (without Mg²⁺ and Ca²⁺), pH 7.3 containing 50% glycerol, 0.5% BSA and 0.02% sodium azide

研究领域: Signal Transduction

储存和运输: Store at -20°C. Avoid repeated freezing and thawing



Western blot analysis of CLPP in K562, rat Brain, 3T3, HeLa lysates using CLPP antibody.



Product Description

Pioneering GTPase and Oncogene Product Development since 2010
