

## CLEAVED-CASPASE 1 RABBIT PAB

货号: N225411

产品全名: Cleaved-Caspase 1 兔多抗

基因符号 CASP1; IL1BC; IL1BCE; Caspase-1; CASP-1; Interleukin-1 beta convertase; IL-1BC; Interleukin-1 beta-converting enzyme; ICE; IL-1 beta-converting enzyme; p45

**UNIPROT ID:** P29466

背景: Thiol protease that cleaves IL-1 beta between an Asp and an Ala, releasing the mature cytokine which is involved in a variety of inflammatory processes. Important for defense against pathogens. Cleaves and activates sterol regulatory element binding proteins (SREBPs). Can also promote apoptosis.

抗原: The antiserum was produced against synthesized peptide derived from human Cleaved-Caspase 1. AA range:161-210

经过测试的应用: WB,ICC/IF,IHC-F,IHC-P,ELISA

推荐稀释比: WB: 1/500-1/1000 IHC: 1/50-1/100 IF: 1/50-1/200 ELISA: 1/10000

种属反应性: Rabbit

克隆性: Rabbit Polyclonal

分子量: Calculated MW: 45 kDa; Observed MW: 25 kDa

亚型: IgG

纯化: Affinity Purified

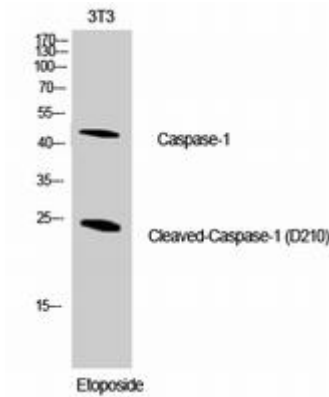
种属反应性: Human,Mouse

**Modification:** Cleaved

成分: PBS (without Mg<sup>2+</sup> and Ca<sup>2+</sup>), pH 7.3 containing 50% glycerol, 0.5% BSA and 0.02% sodium azide

研究领域: apoptosis - Caspase family

储存和运输: Store at -20°C. Avoid repeated freezing and thawing



Western blot analysis of Cleaved-Caspase 1 in NIH3T3 lysates using Cleaved-Caspase 1 antibody.