

CKII ALPHA RABBIT PAB

货号: N225576

产品全名: CKII alpha 兔多抗

基因符号 CSNK2A1; CK2A1; Casein kinase II subunit alpha; CK II alpha

UNIPROT ID: P68400

背景: Catalytic subunit of a constitutively active serine/threonine-protein kinase complex that phosphorylates a large number of substrates containing acidic residues C-terminal to the phosphorylated serine or threonine. Regulates numerous cellular processes, such as cell cycle progression, apoptosis and transcription, as well as viral infection. May act as a regulatory node which integrates and coordinates numerous signals leading to an appropriate cellular response.

抗原: A synthesized peptide derived from human CKII alpha

经过测试的应用: WB,IHC-P,FC

推荐稀释比: WB: 1/500-1/1000 IHC: 1/50-1/100 FC: 1/50-1/100

种属反应性: Rabbit

克隆性: Rabbit Polyclonal

分子量: Calculated MW: 45 kDa; Observed MW: 45 kDa

亚型: IgG

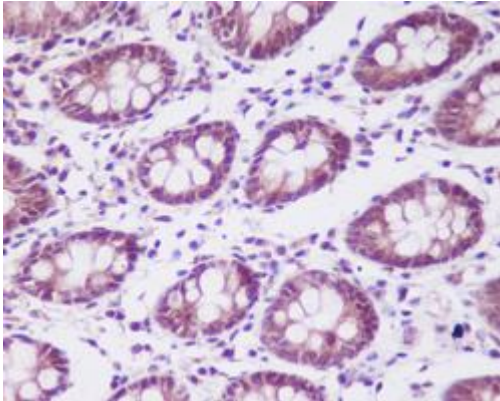
纯化: Affinity Chromatography

种属反应性: Human, Mouse and Rat

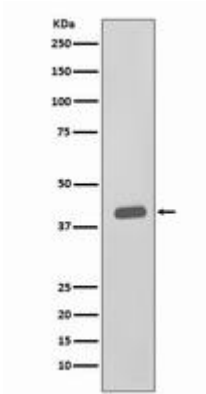
成分: PBS (without Mg²⁺ and Ca²⁺), pH 7.3 containing 50% glycerol, 0.5% BSA and 0.02% sodium azide

研究领域: Epigenetics&Histone phosphorylation

储存和运输: Store at -20°C. Avoid repeated freezing and thawing



Immunohistochemistry analysis of paraffin-embedded Human colon using CKII alpha antibody. High-pressure and temperature Sodium Citrate pH 6.0 was used for antigen retrieval.



Western blot analysis of CKII alpha in HeLa lysates using CKII alpha antibody.