

CHOLINE ACETYLTRANSFERASE RABBIT MAB

货号: N262034

产品全名: Choline Acetyltransferase 兔单克隆抗体

基因符号 CHAT; Choline O-acetyltransferase; CHOACTase; ChAT;
Choline acetylase

UNIPROT ID: P28329

背景: Catalyzes the reversible synthesis of acetylcholine (ACh) from acetyl CoA and choline at cholinergic synapses.

抗原: A synthetic peptide of human Choline Acetyltransferase

经过测试的应用: WB,ICC/IF,IP

推荐稀释比: WB: 1/500-1/1000 IF: 1/50-1/200 IP: 1/20

种属反应性: Rabbit

克隆性: Rabbit Monoclonal

克隆编号: R07-1G8

分子量: Calculated MW: 83 kDa; Observed MW: 72 kDa

亚型: IgG

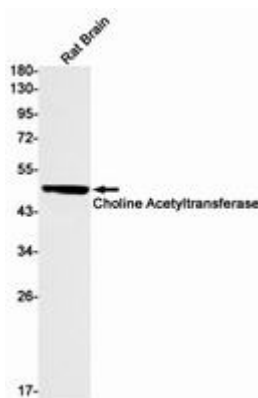
纯化: Affinity Purified

种属反应性: Mouse,Rat

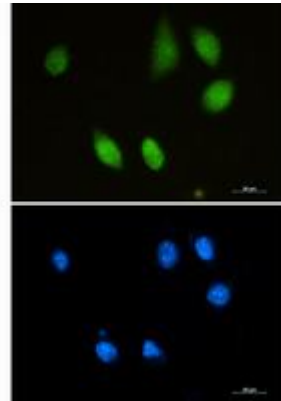
成分: PBS (without Mg²⁺ and Ca²⁺), pH 7.3 containing 50% glycerol, 0.5% BSA and 0.02% sodium azide

研究领域: Neuroscience&Cholinergic Neurons

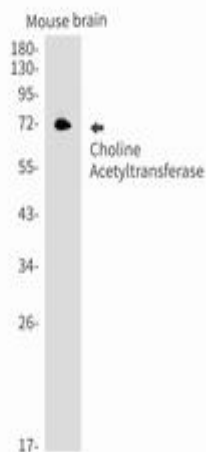
储存和运输: Store at -20°C. Avoid repeated freezing and thawing



Western blot analysis of Choline Acetyltransferase in rat Brain lysates using Choline Acetyltransferase antibody



Immunocytochemistry analysis of Choline Acetyltransferase (green) in SH-SY5Y using Choline Acetyltransferase antibody, and DAPI (blue).



Western blot analysis of Choline Acetyltransferase in mouse brain lysates using Choline Acetyltransferase antibody.