

CELLULAR APOPTOSIS SUSCEPTIBILITY RABBIT MAB

货号: N262027

产品全名: Cellular Apoptosis Susceptibility 兔单克隆抗体

基因符号 CSE1L; CAS; CSE1; Exp2; Importin-alpha re-exporter; Exportin-2; XPO2

UNIPROT ID: P55060

背景: Export receptor for importin-alpha. Mediates importin-alpha re-export from the nucleus to the cytoplasm after import substrates (cargos) have been released into the nucleoplasm. In the nucleus binds cooperatively to importin-alpha and to the GTPase Ran in its active GTP-bound form.

抗原: A synthetic peptide of human Cellular Apoptosis Susceptibility

经过测试的应用: WB,IHC-F,IHC-P,ICC/IF

推荐稀释比: WB: 1/500-1/1000 IHC: 1/50-1/100 IF: 1/50-1/200

种属反应性: Rabbit

克隆性: Rabbit Monoclonal

克隆编号: R09-1C6

分子量: Calculated MW: 110 kDa; Observed MW: 110 kDa

亚型: IgG

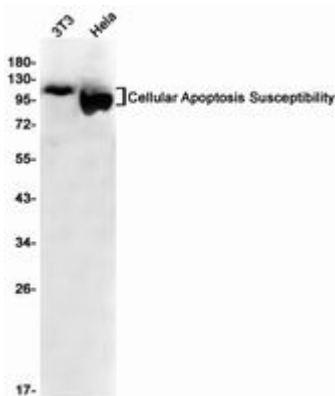
纯化: Affinity Purified

种属反应性: Human,Mouse

成分: PBS (without Mg²⁺ and Ca²⁺), pH 7.3 containing 50% glycerol, 0.5% BSA and 0.02% sodium azide

研究领域: Cell Biology

储存和运输: Store at -20°C. Avoid repeated freezing and thawing



Western blot analysis of ular Apoptosis Susceptibility in 3T3, HeLa lysates using ular Apoptosis Susceptibility antibody.



Product Description

Pioneering GTPase and Oncogene Product Development since 2010
