

## CDT1 RABBIT PAB

货号: N225846

产品全名: CDT1 兔多抗

基因符号 CDT 1; Chromatin licensing and DNA replication factor 1; Retroviral integration site 2; RIS2

**UNIPROT ID:** Q9H211

**背景:** Cooperates with CDC6 to promote the loading of the mini-chromosome maintenance complex onto chromatin to form the pre-replication complex necessary to initiate DNA replication. Binds DNA in a sequence-, strand-, and conformation-independent manner. Potential oncogene.

**抗原:** A synthesized peptide derived from human CDT1

**经过测试的应用:** WB,IHC-P,ICC/IF,IP

**推荐稀释比:** WB: 1/500-1/1000 IHC: 1/50-1/100 IF: 1/50-1/200 IP: 1/20

**种属反应性:** Rabbit

**克隆性:** Rabbit Polyclonal

**分子量:** Calculated MW: 60 kDa; Observed MW: 60 kDa

**亚型:** IgG

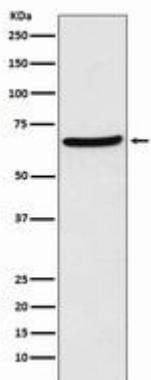
**纯化:** Affinity Chromatography

**种属反应性:** Human

**成分:** PBS (without Mg<sup>2+</sup> and Ca<sup>2+</sup>), pH 7.3 containing 50% glycerol, 0.5% BSA and 0.02% sodium azide

**研究领域:** Epigenetics and Nuclear Signaling

**储存和运输:** Store at -20°C. Avoid repeated freezing and thawing



Western blot analysis of CDT1 in HEK293 lysates using CDT1 antibody.



# Product Description

Pioneering GTPase and Oncogene Product Development since 2010

---