

CDK6 RABBIT MAB

货号: N262019

产品全名: CDK6 兔单克隆抗体

基因符号 CDK 6; Cell division protein kinase 6; Crk 2; Cyclin dependent kinase 6; p40; PLSTIRE; STQTL11

UNIPROT ID: Q00534

背景: The cyclin-dependent kinases form complexes with their cyclin partners and with CDK inhibitors. CDK6 and CDK4 associate with the D-type cyclins and target the retinoblastoma protein, allowing passage through the G1/S phase restriction point.

抗原: A synthetic peptide of human Cdk6

经过测试的应用: WB, ICC/IF

推荐稀释比: WB: 1/500-1/1000 IF: 1/50-1/200

种属反应性: Rabbit

克隆性: Rabbit Monoclonal

克隆编号: R03-2G5

分子量: Calculated MW: 37 kDa; Observed MW: 37 kDa

亚型: IgG

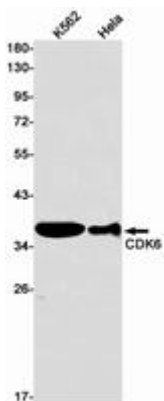
纯化: Affinity Purified

种属反应性: Human

成分: PBS (without Mg²⁺ and Ca²⁺), pH 7.3 containing 50% glycerol, 0.5% BSA and 0.02% sodium azide

研究领域: Signal Transduction

储存和运输: Store at -20°C. Avoid repeated freezing and thawing



Western blot analysis of CDK6 in K562, HeLa lysates using CDK6 antibody.



Product Description

Pioneering GTPase and Oncogene Product Development since 2010
