

CDC34 RABBIT MAB

货号: N263262

产品全名: CDC34 兔单克隆抗体

基因符号 CDC34; UBCH3; UBE2R1; Ubiquitin-conjugating enzyme E2 R1; Ubiquitin-conjugating enzyme E2-32 kDa complementing; Ubiquitin-conjugating enzyme E2-CDC34; Ubiquitin-protein ligase R1

UNIPROT ID: P49427

背景: Involved in ubiquitin conjugation and degradation of CREM isoform ICERIIgamma and ATF15 resulting in abrogation of ICERIIgamma- and ATF5-mediated repression of cAMP-induced transcription during both meiotic and mitotic cell cycles. Involved in the regulation of the cell cycle G2/M phase through its targeting of the WEE1 kinase for ubiquitination and degradation.

抗原: Recombinant protein of human Cdc34

经过测试的应用: WB,IP

推荐稀释比: WB: 1/500-1/1000 IP: 1/20

种属反应性: Rabbit

克隆性: Rabbit Monoclonal

克隆编号: R08-6G3

分子量: Calculated MW: 27 kDa; Observed MW: 32 kDa

亚型: IgG

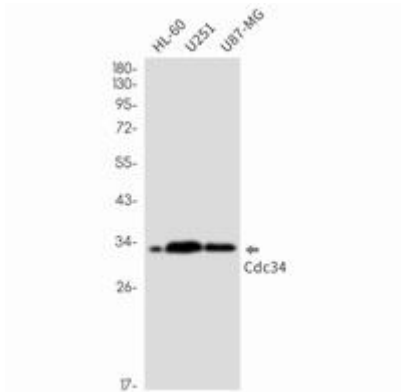
纯化: Affinity Purified

种属反应性: Human, Mouse and Rat

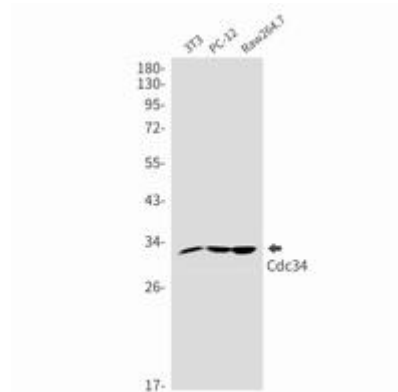
成分: PBS (without Mg²⁺ and Ca²⁺), pH 7.3 containing 50% glycerol, 0.5% BSA and 0.02% sodium azide

研究领域: Epigenetics and Nuclear Signaling

储存和运输: Store at -20°C. Avoid repeated freezing and thawing



Western blot analysis of Cdc34 in HL-60, U251, U87-MG lysates using Cdc34 antibody.



Western blot analysis of Cdc34 in 3T3, PC-12, Raw264.7 lysates using CDC34 antibody.