

## CD35 RABBIT MAB

货号: N261997

产品全名: CD35 兔单克隆抗体

基因符号 C3 binding protein; C3b/C4b receptor; C3BR; C4BR; CD35; CR1; KN

**UNIPROT ID:** P17927

背景: Mediates cellular binding of particles and immune complexes that have activated complement.

抗原: A synthetic peptide of human CD35

经过测试的应用: WB,IHC-P

推荐稀释比: WB: 1/500-1/1000 IHC: 1/50-1/100

种属反应性: Rabbit

克隆性: Rabbit Monoclonal

克隆编号: R06-6D1

分子量: Calculated MW: 224 kDa; Observed MW: 280 kDa

亚型: IgG

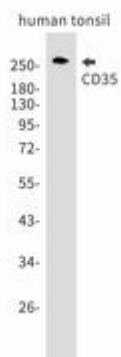
纯化: Affinity Purified

种属反应性: Human

成分: PBS (without Mg<sup>2+</sup> and Ca<sup>2+</sup>), pH 7.3 containing 50% glycerol, 0.5% BSA and 0.02% sodium azide

研究领域: Tags & Cell Markers

储存和运输: Store at -20°C. Avoid repeated freezing and thawing



Western blot analysis of CD35 in Human tonsil lysates using CD35 antibody.