

## CD300D RABBIT PAB

货号: N225124

产品全名: CD300d 兔多抗

基因符号 CD300LD; CD300D; CMRF35A4; CMRF35-like molecule 4; CLM-4; CD300 antigen-like family member D; CMRF35-A4; CD300d

**UNIPROT ID:** Q6UXZ3

**背景:** Predicted to enable transmembrane signaling receptor activity and virus receptor activity. Predicted to be involved in immune system process. Predicted to act upstream of or within regulation of interleukin-6 production and regulation of tumor necrosis factor production. Predicted to be integral component of membrane. Predicted to be active in plasma membrane.

**抗原:** The antiserum was produced against synthesized peptide derived from the Internal region of human CD300LD. AA range:61-110

**经过测试的应用:** WB,ELISA

**推荐稀释比:** WB: 1/500-1/1000 ELISA: 1/10000

**种属反应性:** Rabbit

**克隆性:** Rabbit Polyclonal

**分子量:** Calculated MW: 22 kDa; Observed MW: 22 kDa

**亚型:** IgG

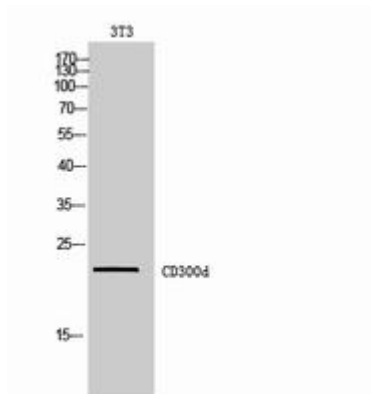
**纯化:** Affinity Purified

**种属反应性:** Human

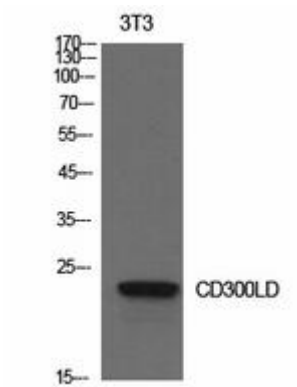
**成分:** PBS (without Mg<sup>2+</sup> and Ca<sup>2+</sup>), pH 7.3 containing 50% glycerol, 0.5% BSA and 0.02% sodium azide

**研究领域:** Immunology

**储存和运输:** Store at -20°C. Avoid repeated freezing and thawing



Western blot analysis of CD300d in 3T3 lysates using CD300d antibody.



Western blot analysis of CD300d in NIH3T3 lysates using CD300d antibody.