

CD272 RABBIT MAB

货号: N261990

产品全名: CD272 兔单克隆抗体

基因符号 A630002H24; B- and T-lymphocyte-associated 蛋白

UNIPROT ID: Q7TSA3

背景: Lymphocyte inhibitory receptor which inhibits lymphocytes during immune response.

抗原: Recombinant protein of mouse CD272

经过测试的应用: WB,IHC-P,IP

推荐稀释比: WB: 1/500-1/1000 IHC: 1/50-1/100 IP: 1/20

种属反应性: Rabbit

克隆性: Rabbit Monoclonal

克隆编号: R09-4A1

分子量: Calculated MW: 34 kDa; Observed MW: 55-80 kDa

亚型: IgG

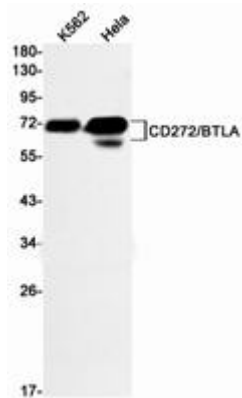
纯化: Affinity Purified

种属反应性: Human,Mouse

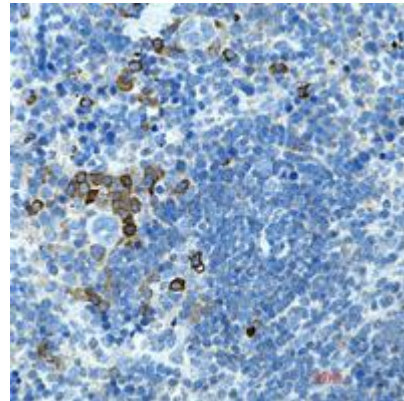
成分: PBS (without Mg²⁺ and Ca²⁺), pH 7.3 containing 50% glycerol, 0.5% BSA and 0.02% sodium azide

研究领域: Immunology

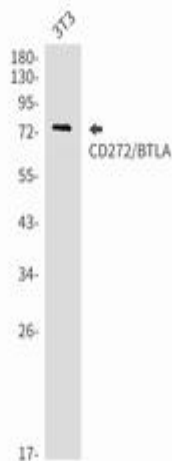
储存和运输: Store at -20°C. Avoid repeated freezing and thawing



Western blot analysis of CD272/BTLA in K562, HeLa lysates using CD272/BTLA antibody



Immunohistochemistry analysis of paraffin-embedded mouse spleen using CD272 antibody. High-pressure and temperature Sodium Citrate pH 6.0 was used for antigen retrieval.



Western blot analysis of CD272/BTLA in 3T3 lysates using CD272/BTLA antibody.