

CD1C RABBIT PAB

货号: N225175

产品全名: CD1C 兔多抗

基因符号 CD1C; T-cell surface glycoprotein CD1c; CD1c

UNIPROT ID: P29017

背景: Antigen-presenting protein that binds self and non-self lipid and glycolipid antigens and presents them to T-cell receptors on natural killer T-cells.

抗原: The antiserum was produced against synthesized peptide derived from the Internal region of human CD1C. AA range:211-260

经过测试的应用: WB,ELISA

推荐稀释比: WB: 1/500-1/1000 ELISA: 1/10000

种属反应性: Rabbit

克隆性: Rabbit Polyclonal

分子量: Calculated MW: 38 kDa; Observed MW: 38 kDa

亚型: IgG

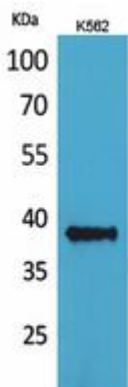
纯化: Affinity Purified

种属反应性: Human

成分: PBS (without Mg²⁺ and Ca²⁺), pH 7.3 containing 50% glycerol, 0.5% BSA and 0.02% sodium azide

研究领域: Immunology

储存和运输: Store at -20°C. Avoid repeated freezing and thawing



Western blot analysis of CD1C in K562 lysates using CD1C antibody.