

CD166 RABBIT PAB

货号: N225913

产品全名: CD166 兔多抗

基因符号 ALCAM; MEMD; CD166 antigen; Activated leukocyte cell adhesion molecule; CD166

UNIPROT ID: Q13740

背景: Cell adhesion molecule that binds to CD6. Involved in neurite extension by neurons via heterophilic and homophilic interactions. May play a role in the binding of T- and B-cells to activated leukocytes, as well as in interactions between cells of the nervous system.

抗原: A synthesized peptide derived from human CD166

经过测试的应用: WB,IHC-P,ICC/IF,IP,FC

推荐稀释比: WB: 1/500-1/1000 IHC: 1/50-1/100 IF: 1/50-1/200 IP: 1/20 FC: 1/50-1/100

种属反应性: Rabbit

克隆性: Rabbit Polyclonal

分子量: Calculated MW: 65 kDa; Observed MW: 100 kDa

亚型: IgG

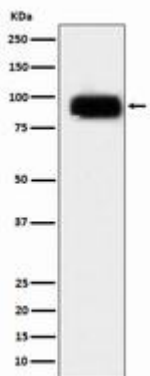
纯化: Affinity Chromatography

种属反应性: Human, Mouse and Rat

成分: PBS (without Mg²⁺ and Ca²⁺), pH 7.3 containing 50% glycerol, 0.5% BSA and 0.02% sodium azide

研究领域: Immunology

储存和运输: Store at -20°C. Avoid repeated freezing and thawing



Western blot analysis of CD166 in Daudi lysates using CD166 antibody.



Product Description

Pioneering GTPase and Oncogene Product Development since 2010
