

CD130 RABBIT PAB

货号: N226078

产品全名: CD130 兔多抗

基因符号 Interleukin-6 receptor subunit beta ,IL-6 receptor subunit beta,IL-6R subunit beta,IL-6R-beta, IL-6RB,CDw130

UNIPROT ID: P40189

背景: The receptor systems for IL6, LIF, OSM, CNTF, IL11, CTF1 and BSF3 can utilize IL6ST for initiating signal transmission. Binding of IL6 to IL6R induces IL6ST homodimerization and formation of a high-affinity receptor complex, which activates the intracellular JAK-MAPK and JAK-STAT3 signaling pathways.

抗原: A synthesized peptide derived from human CD130/gp130

经过测试的应用: WB,IHC-P

推荐稀释比: WB: 1/500-1/1000 IHC: 1/50-1/100

种属反应性: Rabbit

克隆性: Rabbit Polyclonal

克隆编号: [Clone ID]

分子量: Calculated MW: 104 kDa; Observed MW: 130-140kDa

亚型: IgG

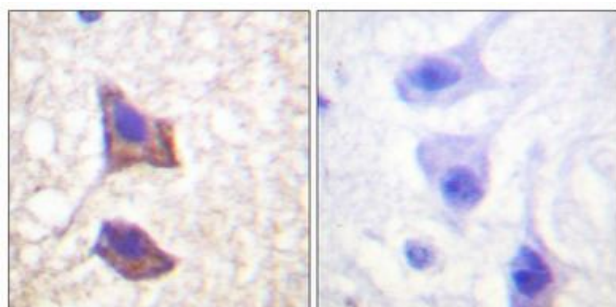
纯化: Affinity Purified

种属反应性: Human,Mouse

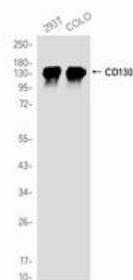
成分: PBS (without Mg²⁺ and Ca²⁺), pH 7.3 containing 50% glycerol, 0.5% BSA and 0.02% sodium azide

研究领域: Cell Biology

储存和运输: Store at -20°C. Avoid repeated freezing and thawing



Immunohistochemistry analysis of paraffin-embedded human brain using CD130 antibody. High-pressure and temperature Sodium Citrate pH 6.0 was used for antigen retrieval. Sample with blocking peptide on the right.



Western blot analysis of CD130 in 293T, COLO lysates using CD130 antibody.