

## CCR8 RABBIT PAB

货号: N226017

产品全名: CCR8 兔多抗

基因符号 CKRL1; CMKBR8; CMKBRL2

**UNIPROT ID:** P51685

背景: Receptor for the chemokine CCL1/SCYA1/I-309. May regulate monocyte chemotaxis and thymic cell line apoptosis. Alternative coreceptor with CD4 for HIV-1 infection.

抗原: A synthetic peptide of human CCR8

经过测试的应用: WB, ICC/IF, FC

推荐稀释比: WB: 1/500-1/1000 IF: 1/50-1/200 FC: 1/50-1/100

种属反应性: Rabbit

克隆性: Rabbit Polyclonal

分子量: Calculated MW: 41 kDa; Observed MW: 41 kDa

亚型: IgG

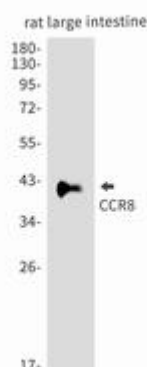
纯化: Affinity Purified

种属反应性: Rat

成分: PBS (without Mg<sup>2+</sup> and Ca<sup>2+</sup>), pH 7.3 containing 50% glycerol, 0.5% BSA and 0.02% sodium azide

研究领域: Immunology

储存和运输: Store at -20°C. Avoid repeated freezing and thawing



Western blot analysis of CCR8 in rat large intestine lysates using CCR8 antibody.