

CAP1 RABBIT PAB

货号: N226018

产品全名: CAP1 兔多抗

基因符号 CAP; CAPI-PEN

UNIPROT ID: Q01518

背景: Directly regulates filament dynamics and has been implicated in a number of complex developmental and morphological processes, including mRNA localization and the establishment of cell polarity.

抗原: A synthetic peptide of human CAPI

经过测试的应用: WB,IHC-F,IHC-P,ICC/IF,IP

推荐稀释比: WB: 1/500-1/1000 IHC: 1/50-1/100 IF: 1/50-1/200 IP: 1/20

种属反应性: Rabbit

克隆性: Rabbit Polyclonal

分子量: Calculated MW: 52 kDa; Observed MW: 56 kDa

亚型: IgG

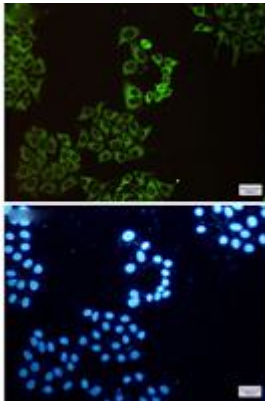
纯化: Affinity Purified

种属反应性: Human

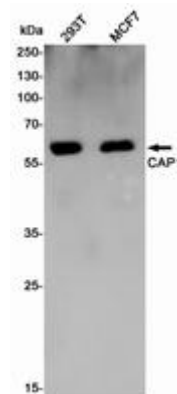
成分: PBS (without Mg²⁺ and Ca²⁺), pH 7.3 containing 50% glycerol, 0.5% BSA and 0.02% sodium azide

研究领域: Signal Transduction

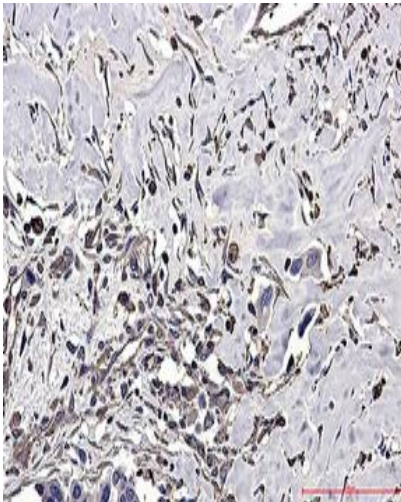
储存和运输: Store at -20°C. Avoid repeated freezing and thawing



Immunocytochemistry analysis of CAP1 (green) in Hela using CAP1 antibody, and DAPI (blue)



Western blot analysis of CAP1 in 293T, MCF-7 lysates using CAP1 antibody.



Immunohistochemistry analysis of paraffin-embedded Human Cholangiocarcinoma using CAP1 antibody. High-pressure and temperature Sodium Citrate pH 6.0 was used for antigen retrieval.