

C-REL RABBIT MAB

货号: N263280

产品全名: c-Rel 兔单克隆抗体

基因符号 REL

UNIPROT ID: Q04864

背景: c-Rel contains an amino-terminal DNA-binding domain referred to as the REL homology domain (REH) and carboxy-terminal transactivation domains. The c-Rel protein is typically inhibited in unstimulated cells by I κ B α and I κ B β . c-Rel expression is highest in hematopoietic cells with extensive research studies demonstrating its role in immune cell function and pathogenesis of disease.

抗原: A synthetic peptide of human c-Rel

经过测试的应用: WB,IP

推荐稀释比: WB: 1/500-1/1000 IP: 1/20

种属反应性: Rabbit

克隆性: Rabbit Monoclonal

克隆编号: R03-3D5

分子量: Calculated MW: 69 kDa; Observed MW: 78 kDa

亚型: IgG

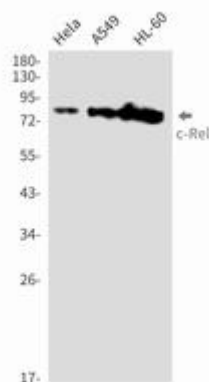
纯化: Affinity Purified

种属反应性: Human

成分: PBS (without Mg²⁺ and Ca²⁺), pH 7.3 containing 50% glycerol, 0.5% BSA and 0.02% sodium azide

研究领域: Signal Transduction

储存和运输: Store at -20°C. Avoid repeated freezing and thawing



Western blot analysis of c-Rel in HeLa, A549, HL-60 lysates using c-Rel antibody.



Product Description

Pioneering GTPase and Oncogene Product Development since 2010
