

BRAT1 RABBIT MAB

货号: N261933

产品全名: BRAT1 兔单克隆抗体

基因符号 BRCA1-associated ATM activator 1; BRCA1-associated protein required for ATM activation protein 1

UNIPROT ID: Q6PJG6

背景: Involved in DNA damage response; activates kinases ATM, SMC1A and PRKDC by modulating their phosphorylation status following ionizing radiation (IR) stress (PubMed:16452482, PubMed:22977523). Plays a role in regulating mitochondrial function and cell proliferation (PubMed:25070371). Required for protein stability of MTOR and MTOR-related proteins, and cell cycle progress by growth factors (PubMed:25657994).

抗原: Recombinant protein of human BRAT1

经过测试的应用: WB, ICC/IF, IP

推荐稀释比: WB: 1/500-1/1000 IF: 1/50-1/200 IP: 1/20

种属反应性: Rabbit

克隆性: Rabbit Monoclonal

克隆编号: R02-4D9

分子量: Calculated MW: 88 kDa; Observed MW: 88 kDa

亚型: IgG

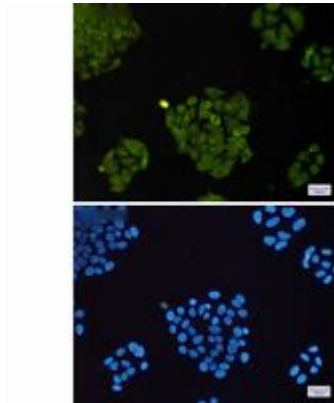
纯化: Affinity Purified

种属反应性: Human

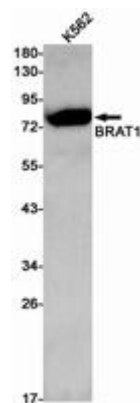
成分: PBS (without Mg²⁺ and Ca²⁺), pH 7.3 containing 50% glycerol, 0.5% BSA and 0.02% sodium azide

研究领域: Epigenetics and Nuclear Signaling

储存和运输: Store at -20°C. Avoid repeated freezing and thawing



Immunocytochemistry analysis of BRAT1(green) in HeLa using BRAT1 antibody, and DAPI(blue)



Western blot analysis of BRAT1 in K562 lysates using BRAT1 antibody.