

## BRAT1 RABBIT MAB

货号: N261934

产品全名: BRAT1 兔单克隆抗体

基因符号 BRCA1-associated ATM activator 1; BRCA1-associated protein required for ATM activation protein 1

**UNIPROT ID:** Q6PJG6

背景: Involved in DNA damage response; activates kinases ATM, SMC1A and PRKDC by modulating their phosphorylation status following ionizing radiation (IR) stress (PubMed:16452482, PubMed:22977523). Plays a role in regulating mitochondrial function and cell proliferation (PubMed:25070371). Required for protein stability of MTOR and MTOR-related proteins, and cell cycle progress by growth factors (PubMed:25657994).

抗原: Recombinant protein of human BRAT1

经过测试的应用: WB,IP

推荐稀释比: WB: 1/500-1/1000 IP: 1/20

种属反应性: Rabbit

克隆性: Rabbit Monoclonal

克隆编号: R02-5A1

分子量: Calculated MW: 88 kDa; Observed MW: 88 kDa

亚型: IgG

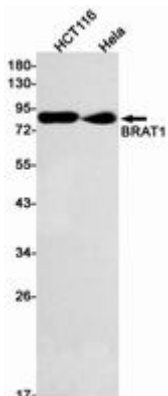
纯化: Affinity Purified

种属反应性: Human

成分: PBS (without Mg<sup>2+</sup> and Ca<sup>2+</sup>), pH 7.3 containing 50% glycerol, 0.5% BSA and 0.02% sodium azide

研究领域: Epigenetics and Nuclear Signaling

储存和运输: Store at -20°C. Avoid repeated freezing and thawing



Western blot analysis of BRAT1 in HCT116, HeLa lysates using BRAT1 antibody.



# Product Description

Pioneering GTPase and Oncogene Product Development since 2010

---