

## BOVINE SERUM ALBUMIN RABBIT PAB

货号: N225517

产品全名: Bovine Serum Albumin 兔多抗

基因符号 BSA; ALB; Albumin; HSA; PRO0883; Serum Albumin

**UNIPROT ID:** P02769

**背景:** Serum albumin, the main protein of plasma, has a good binding capacity for water, Ca<sup>2+</sup>, Na<sup>+</sup>, K<sup>+</sup>, fatty acids, hormones, bilirubin and drugs. Its main function is the regulation of the colloidal osmotic pressure of blood. Major zinc transporter in plasma, typically binds about 80% of all plasma zinc.

**抗原:** Recombinant Protein of Bovine Serum Albumin

**经过测试的应用:** WB,ELISA

**推荐稀释比:** WB: 1/500-1/1000 ELISA: 1/10000

**种属反应性:** Rabbit

**克隆性:** Rabbit Polyclonal

**分子量:** Calculated MW: 69 kDa; Observed MW: 66 kDa

**亚型:** IgG

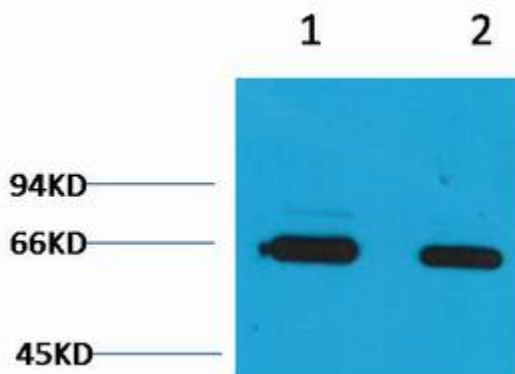
**纯化:** Affinity Purified

**种属反应性:** Bovine

**成分:** PBS (without Mg<sup>2+</sup> and Ca<sup>2+</sup>), pH 7.3 containing 50% glycerol, 0.5% BSA and 0.02% sodium azide

**研究领域:** Cardiovascular

**储存和运输:** Store at -20°C. Avoid repeated freezing and thawing



Western blot analysis of Bovine Serum Albumin in Bovine Serum Albumin lysates using Bovine Serum Albumin antibody.



# Product Description

Pioneering GTPase and Oncogene Product Development since 2010

---