

## BMP2 RABBIT MAB

货号: N261928

产品全名: BMP2 兔单克隆抗体

基因符号 BMP2; BMP2A; Bone morphogenetic protein 2; BMP-2; Bone morphogenetic protein 2A; BMP-2A

**UNIPROT ID:** P12643

背景: Bone morphogenetic proteins (BMPs) are members of the TGF $\beta$  superfamily. BMPs are involved in the induction of cartilage and bone formation. Induces cartilage and bone formation.

抗原: Recombinant protein of human BMP2

经过测试的应用: WB, ICC/IF

推荐稀释比: WB: 1/500-1/1000 IF: 1/50-1/200

种属反应性: Rabbit

克隆性: Rabbit Monoclonal

克隆编号: R03-3H9

分子量: Calculated MW: 45 kDa; Observed MW: 30 kDa

亚型: IgG

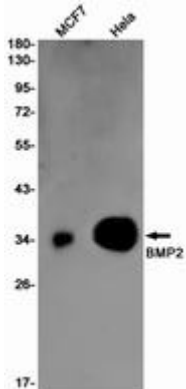
纯化: Affinity Purified

种属反应性: Human

成分: PBS (without Mg<sup>2+</sup> and Ca<sup>2+</sup>), pH 7.3 containing 50% glycerol, 0.5% BSA and 0.02% sodium azide

研究领域: Cancer

储存和运输: Store at -20°C. Avoid repeated freezing and thawing



Western blot analysis of BMP2 in MCF-7, HeLa lysates using BMP2 antibody.