

## BESTROPHIN 2 RABBIT PAB

货号: N225528

产品全名: Bestrophin 2 兔多抗

基因符号 BEST 2 antibody; FLJ20132 antibody; Vitelliform macular dystrophy 2 homolog antibody

**UNIPROT ID:** Q8NFUI

背景: Forms calcium-sensitive chloride channels.

抗原: Synthetic Peptide of BEST2

经过测试的应用: WB,IHC-P

推荐稀释比: WB: 1/500-1/1000 IHC: 1/50-1/100

种属反应性: Rabbit

克隆性: Rabbit Polyclonal

分子量: Calculated MW: 57 kDa; Observed MW: 50 kDa

亚型: IgG

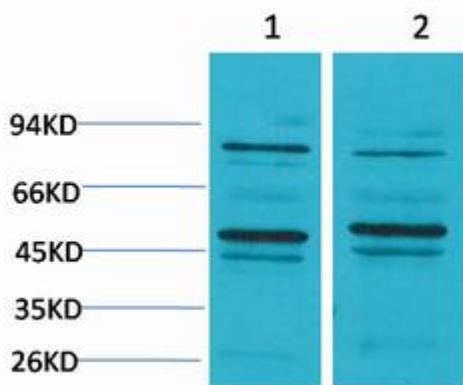
纯化: Affinity Purified

种属反应性: Mouse,Rat

成分: PBS (without Mg<sup>2+</sup> and Ca<sup>2+</sup>), pH 7.3 containing 50% glycerol, 0.5% BSA and 0.02% sodium azide

研究领域: Signal Transduction

储存和运输: Store at -20°C. Avoid repeated freezing and thawing



Western blot analysis of Bestrophin 2 in mouse Brain, rat Brain lysates using Bestrophin2 antibody.