

BCL6 RABBIT PAB

货号: N225345

产品全名: Bcl6 兔多抗

基因符号 BCL6; BCL5; LAZ3; ZBTB27; ZNF51; B-cell lymphoma 6 protein; BCL-6; B-cell lymphoma 5 protein; BCL-5; Protein LAZ-3; Zinc finger and BTB domain-containing protein 27; Zinc finger protein 51

UNIPROT ID: P41182

背景: Bcl-6, a transcriptional repressor, binds Stat recognition-like DNA elements and influences germinal center development and cell differentiation. Additionally, Bcl-6 negatively regulates NFκB expression, thereby inhibiting NFκB-mediated cellular functions. HDAC- and silent information regulator (SIR)-2-dependent acetylation of Bcl-6 causes downregulation of activity by inhibiting the ability of Bcl-6 to recruit complexes containing histone deacetylases (HDACs).

抗原: The antiserum was produced against synthesized peptide derived from the Internal region of human BCL6. AA range:271-320

经过测试的应用: ICC/IF, WB, IHC-F, IHC-P, ELISA

推荐稀释比: WB: 1/500-1/1000 IHC: 1/50-1/100 IF: 1/50-1/200 ELISA: 1/10000

种属反应性: Rabbit

克隆性: Rabbit Polyclonal

分子量: Calculated MW: 79 kDa; Observed MW: 79 kDa

亚型: IgG

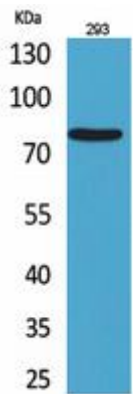
纯化: Affinity Purified

种属反应性: Human, Mouse and Rat

成分: PBS (without Mg²⁺ and Ca²⁺), pH 7.3 containing 50% glycerol, 0.5% BSA and 0.02% sodium azide

研究领域: Epigenetics and Nuclear Signaling

储存和运输: Store at -20°C. Avoid repeated freezing and thawing



Western blot analysis of Bcl6 in 293 lysates using Bcl6 antibody.