

BCL2 RABBIT PAB

货号: N225791

产品全名: Bcl2 兔多抗

基因符号 BCL2; Apoptosis regulator Bcl-2

UNIPROT ID: P10415

背景: This gene encodes an integral outer mitochondrial membrane protein that blocks the apoptotic death of some cells such as lymphocytes. Constitutive expression of BCL2, such as in the case of translocation of BCL2 to Ig heavy chain locus, is thought to be the cause of follicular lymphoma.

抗原: A synthesized peptide derived from human Bcl-2

经过测试的应用: WB,IHC-P,ICC/IF,FC

推荐稀释比: WB: 1/500-1/1000 IHC: 1/50-1/100 IF: 1/50-1/200 FC: 1/50-1/100

种属反应性: Rabbit

克隆性: Rabbit Polyclonal

分子量: Calculated MW: 26 kDa; Observed MW: 26 kDa

亚型: IgG

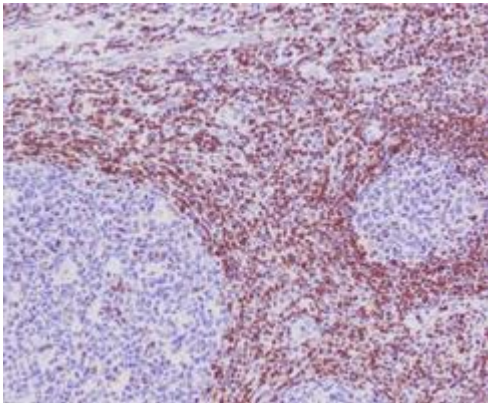
纯化: Affinity Chromatography

种属反应性: Human,Mouse

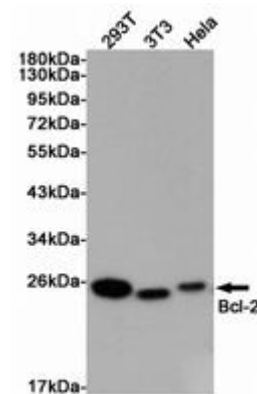
成分: PBS (without Mg²⁺ and Ca²⁺), pH 7.3 containing 50% glycerol, 0.5% BSA and 0.02% sodium azide

研究领域: Autophag&yAutophagosome

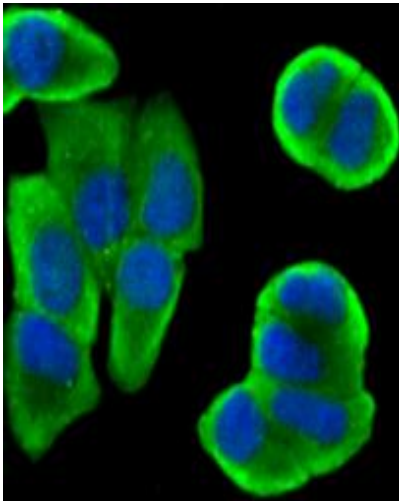
储存和运输: Store at -20°C. Avoid repeated freezing and thawing



Immunohistochemistry analysis of paraffin-embedded Human tonsil using Bcl2 antibody. High-pressure and temperature Sodium Citrate pH 6.0 was used for antigen retrieval.



Western blot analysis of Bcl2 in 293T, 3T3 and HeLa lysates using Bcl2 antibody.



Immunocytochemistry analysis of Bcl2 (green) in MCF-7 using Bcl2 antibody, and DAPI (blue)